

RESEARCH ARTICLE

The role of premarital childbearing in fertility intensity and reproductive intentions: Insights from sub-Saharan Africa

Supplementary Files

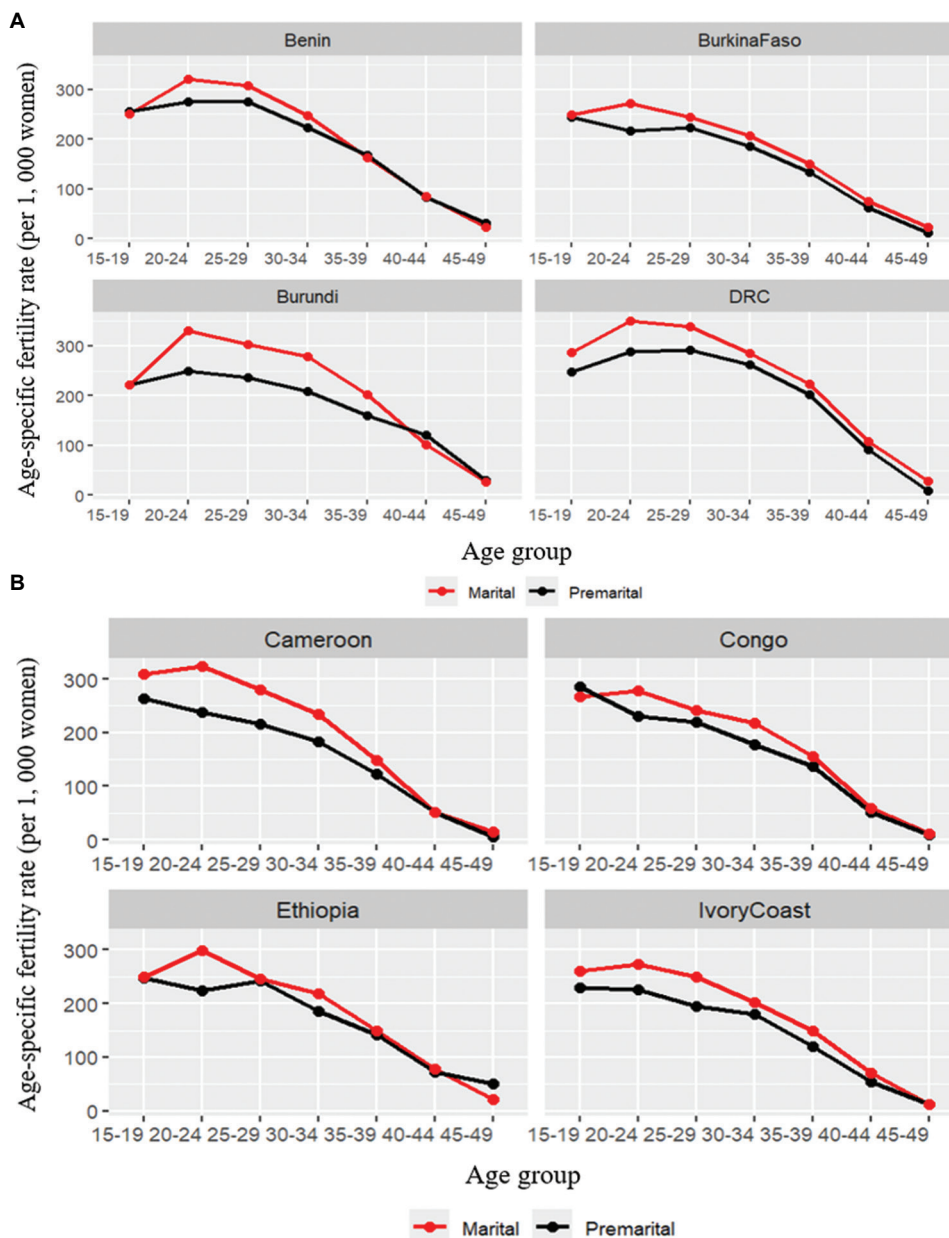
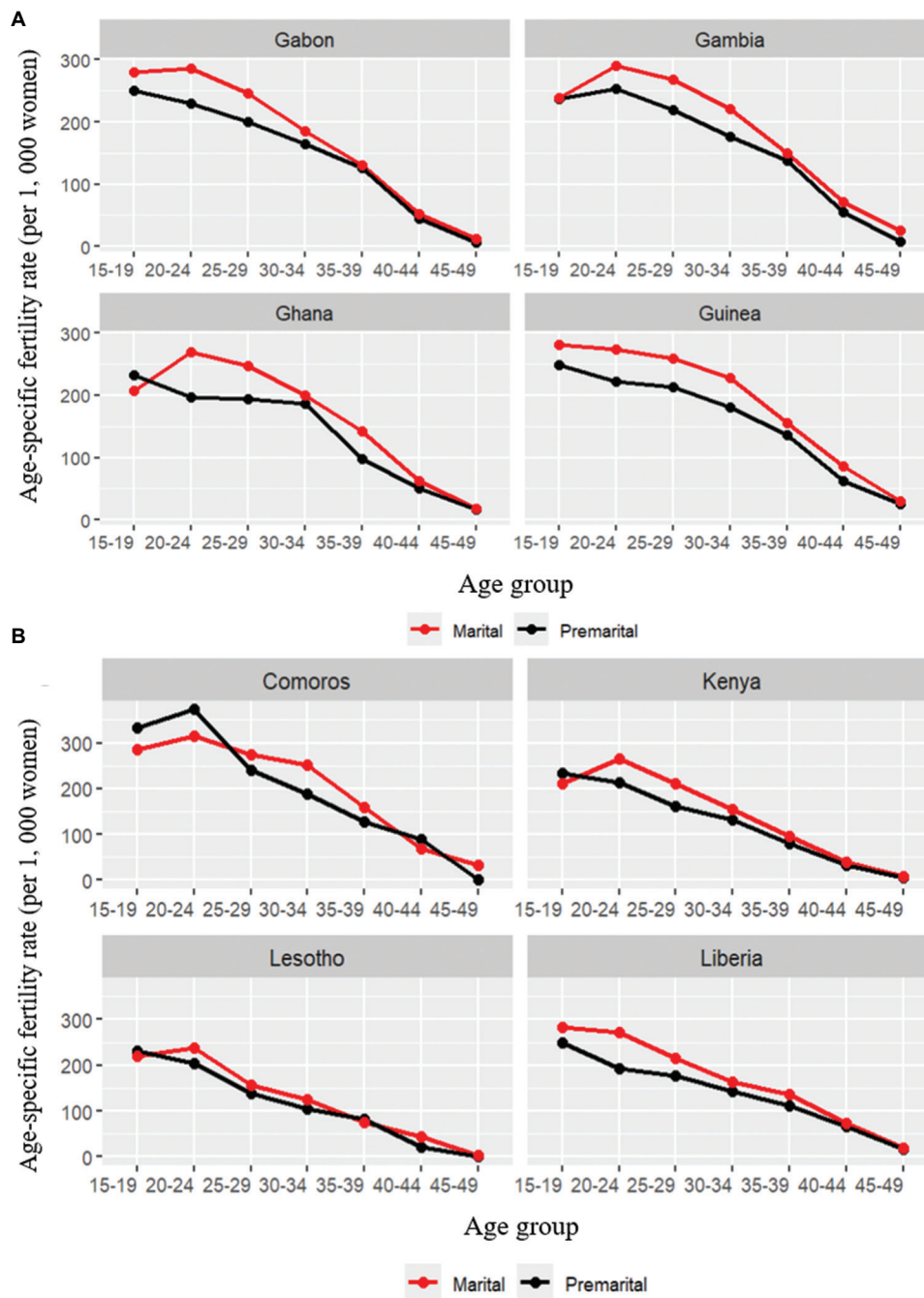
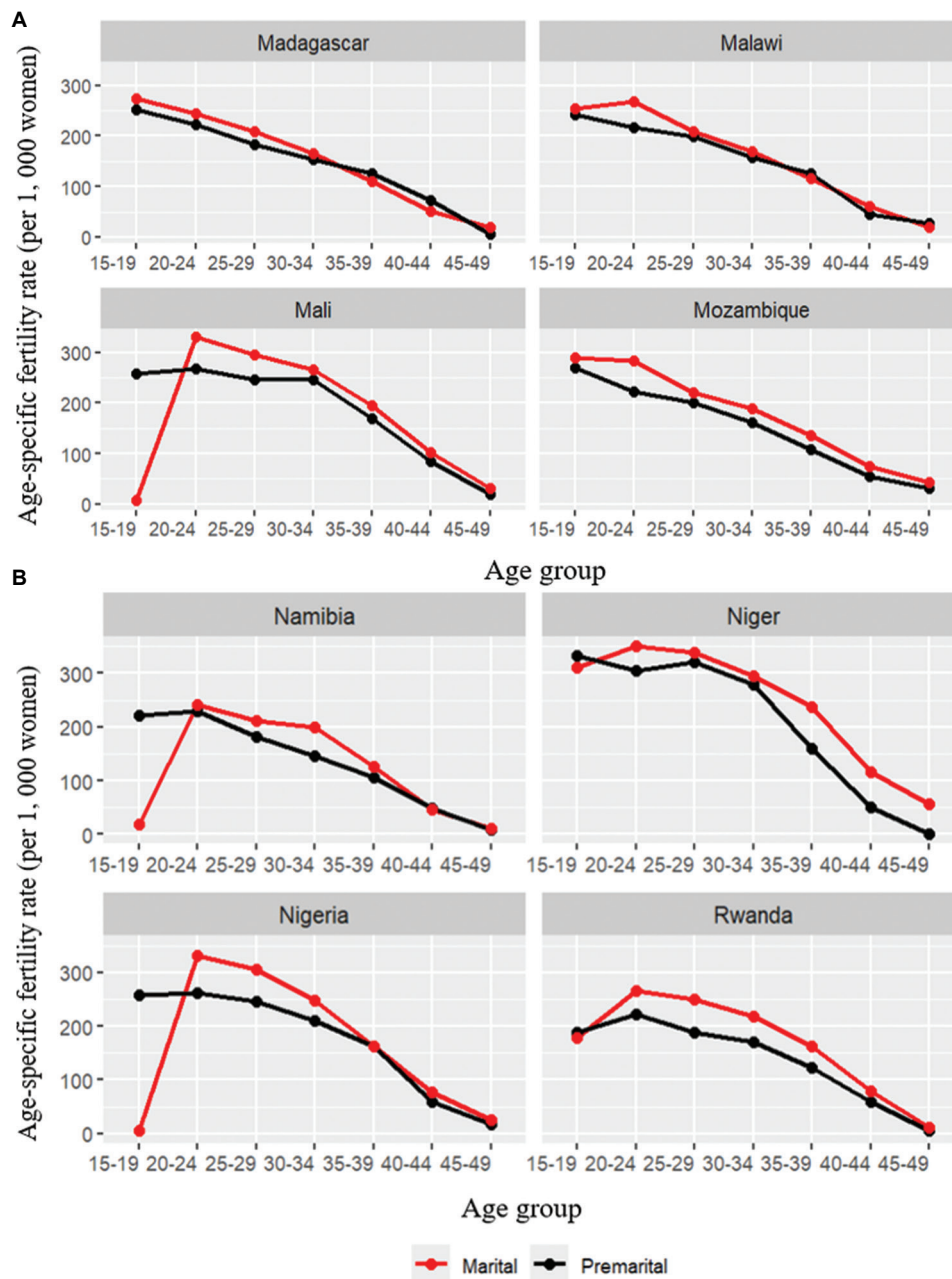


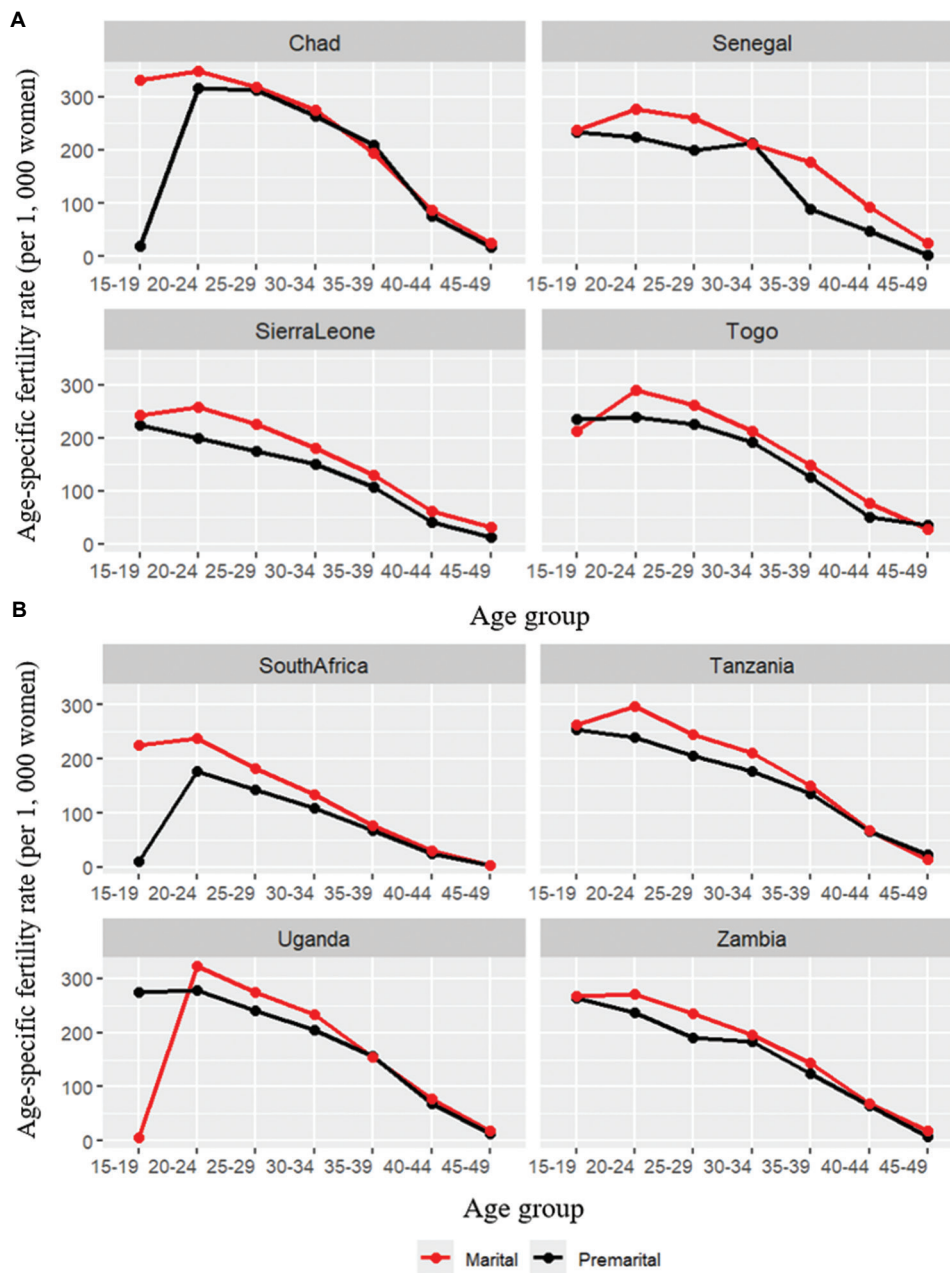
Figure S1. Comparison of age-specific fertility rates among women with premarital first birth and marital childbearing. (A) Benin, Burkina Faso, Burundi, Democratic Republic of the Congo (DRC). (B) Cameroon, Congo, Ethiopia, Ivory Coast.



**Figure S2.** Comparison of age-specific fertility rates among women with premarital first birth and marital childbearing. (A) Gabon, Gambia, Ghana, Guinea. (B) Comoros, Kenya, Lesotho, Liberia.



**Figure S3.** Comparison of age-specific fertility rates among women with premarital first birth and marital childbearing. (A) Madagascar, Malawi, Mali, Mozambique. (B) Namibia, Niger, Nigeria, Rwanda.



**Figure S4.** Comparison of age-specific fertility rates among women with premarital first birth and marital childbearing. (A) Chad, Senegal, Sierra Leone, Togo. (B) South Africa, Tanzania, Uganda, Zambia.

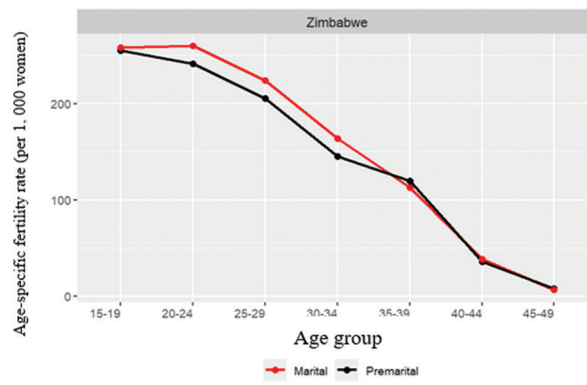
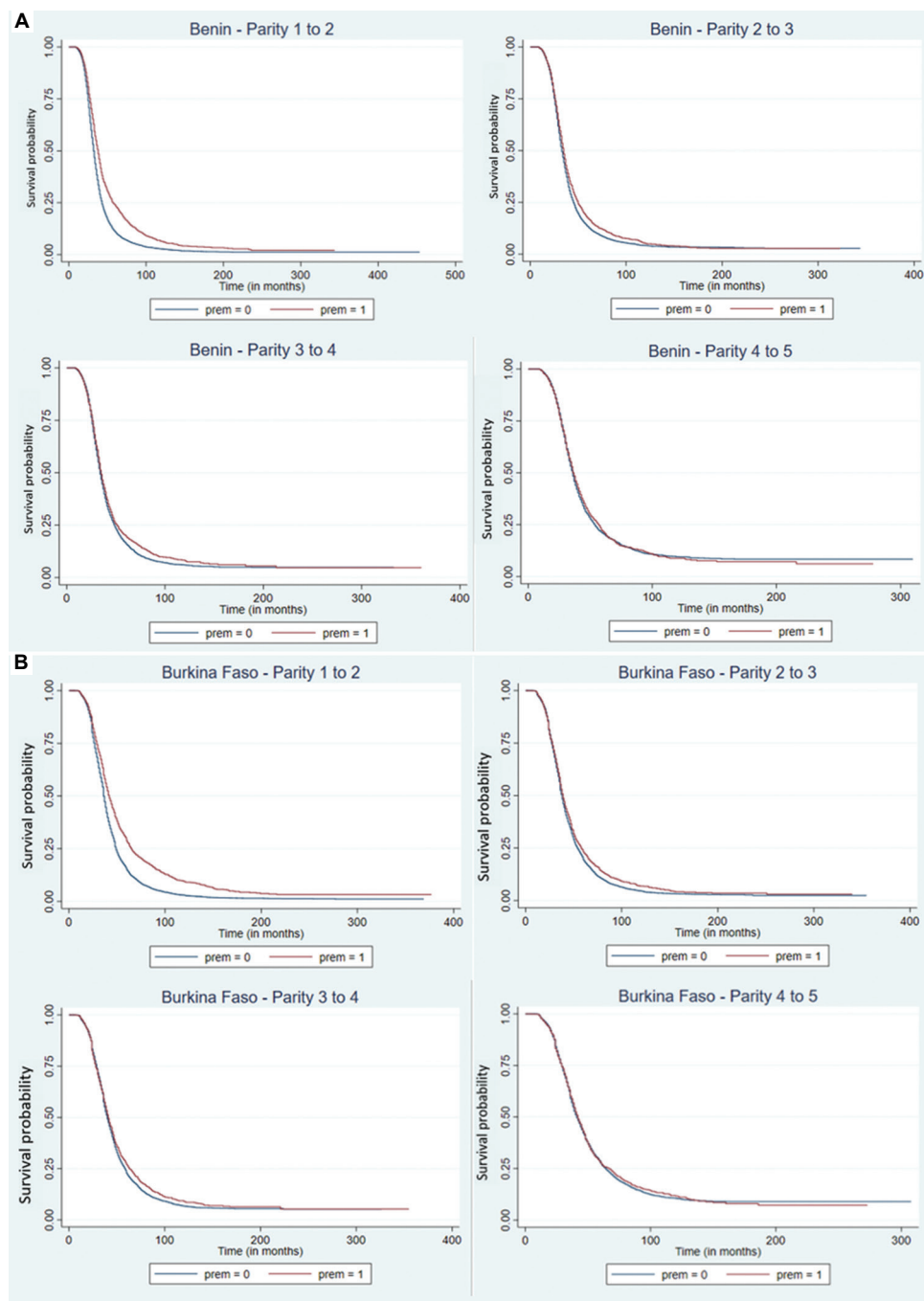
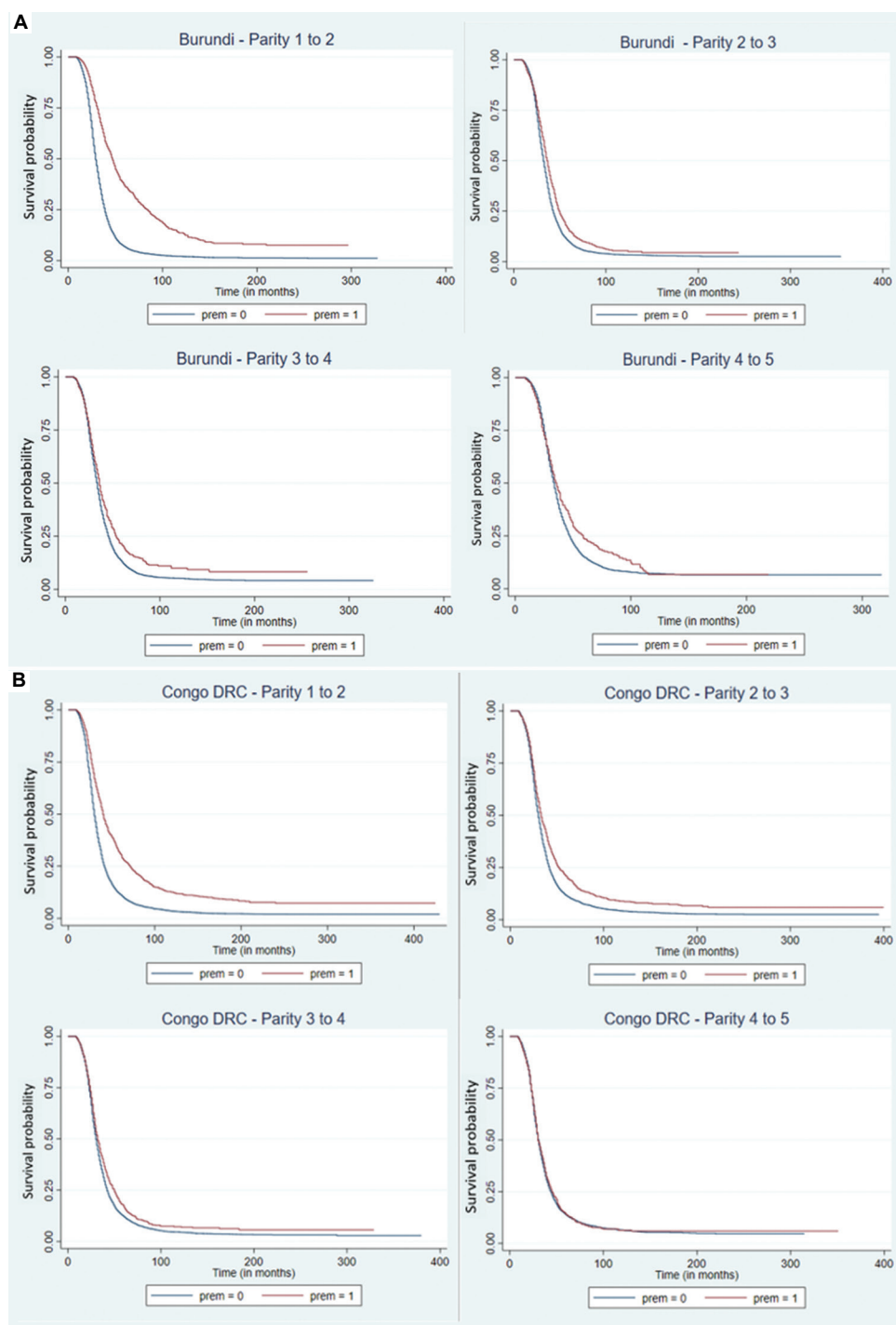


Figure S5. Comparison of age-specific fertility rates among women with premarital first birth and marital childbearing in Zimbabwe

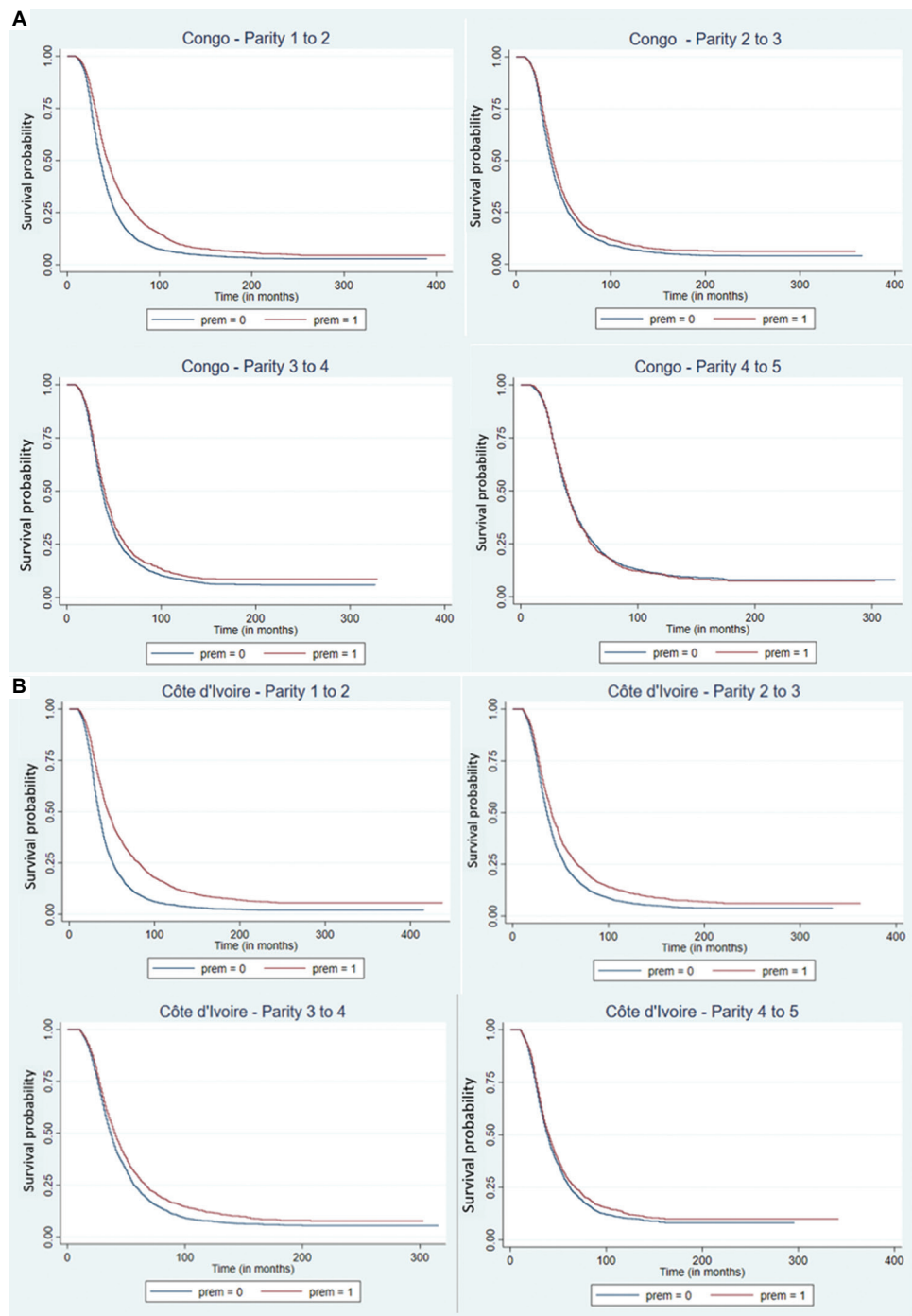


**Figure S6.** Comparison of parity progression ratios among women with premarital first births and marital childbearing in (A) Benin and (B) Burkina Faso, stratified by parity

Note: Prem = 1 indicates premarital first birth and prem = 0 indicates marital first birth.

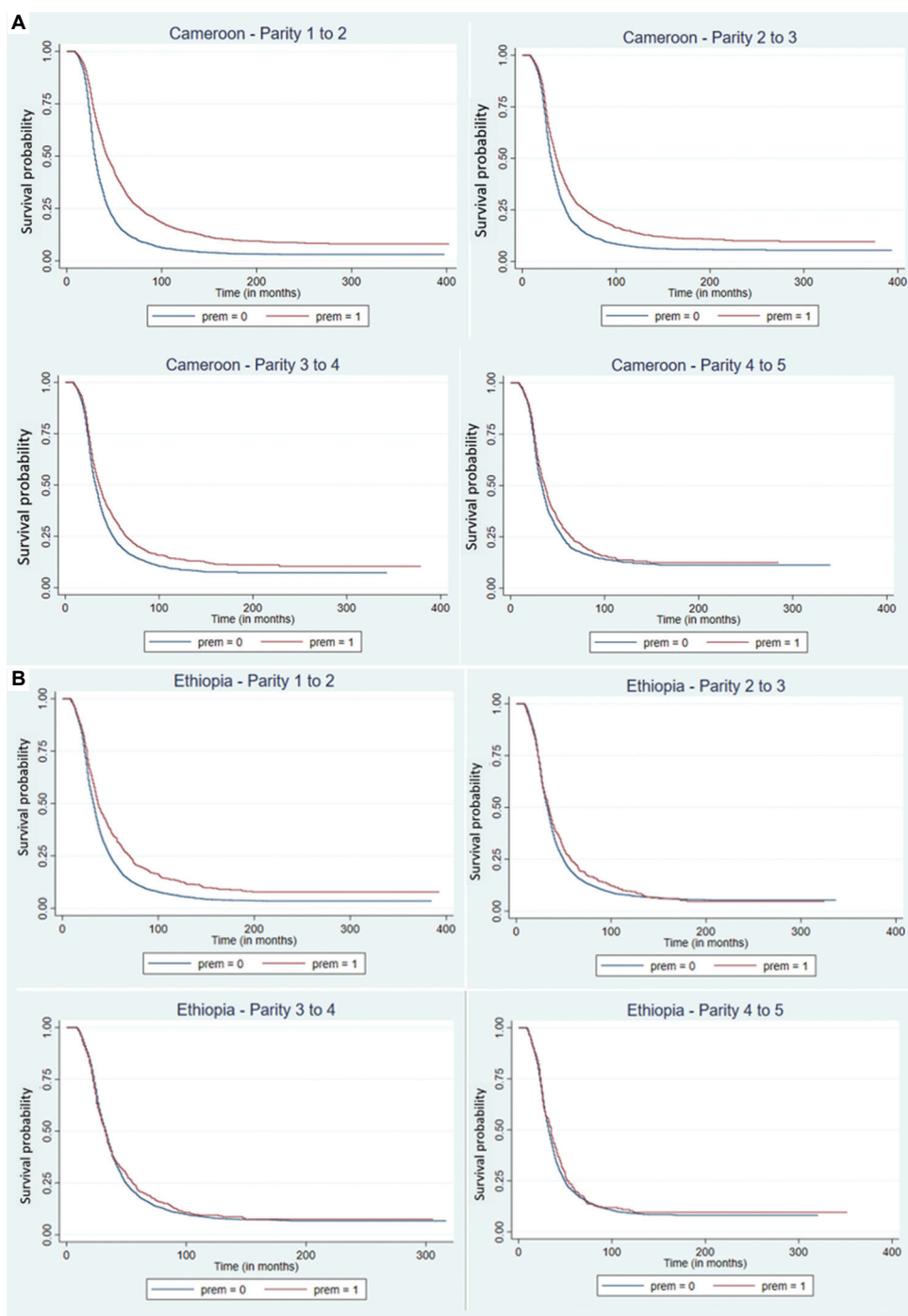


**Figure S7.** Comparison of parity progression ratios among women with premarital first births and marital childbearing in (A) Burundi and (B) Congo DRC, stratified by specific parity  
Note: Prem = 1 indicates premarital first birth and prem = 0 indicates marital first birth.



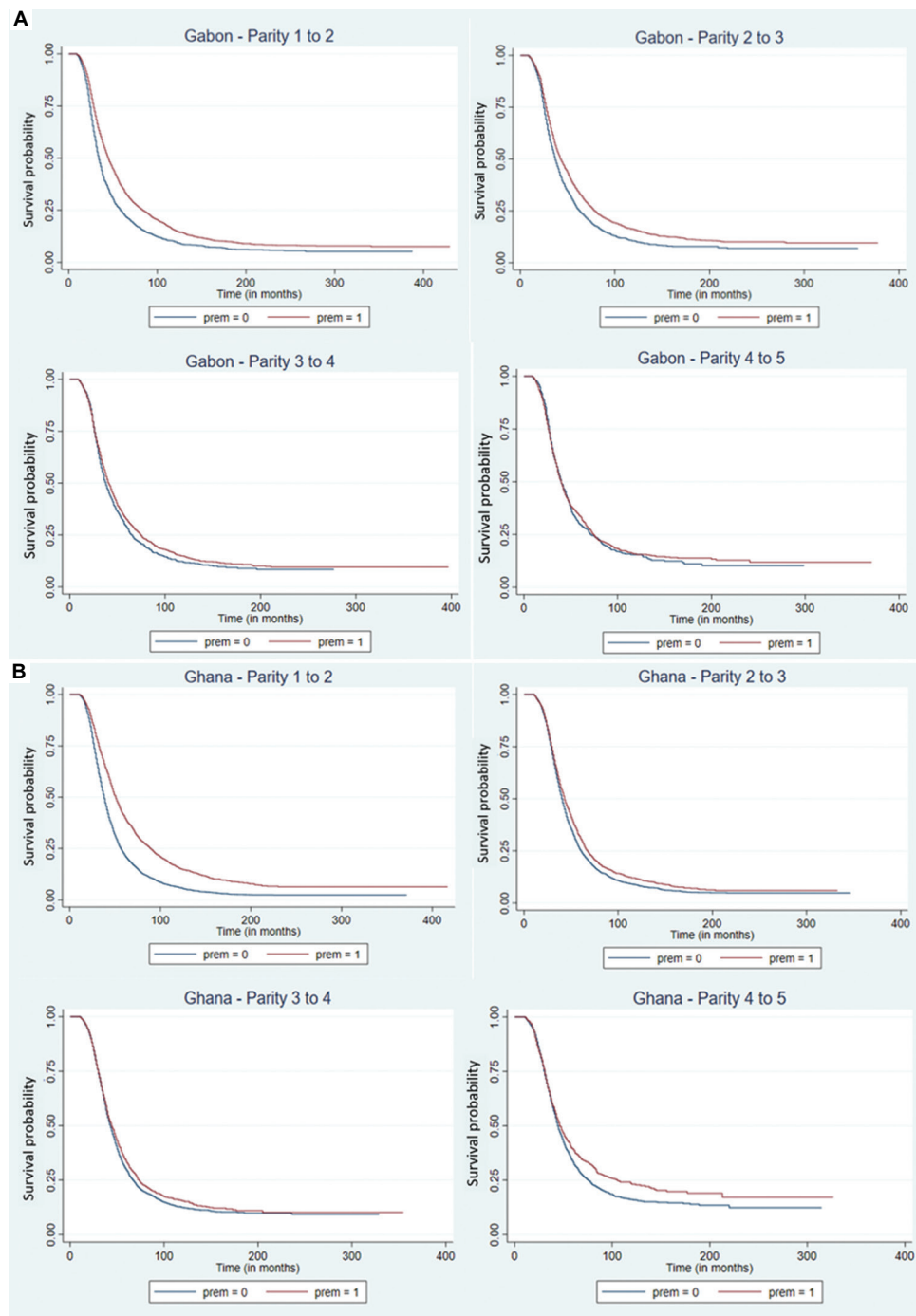
**Figure S8.** Comparison of parity progression ratios among women with premarital first births and marital childbearing in (A) Congo and (B) Côte d'Ivoire, stratified by specific parity

Note: Prem = 1 indicates premarital first birth and prem = 0 indicates marital first birth.



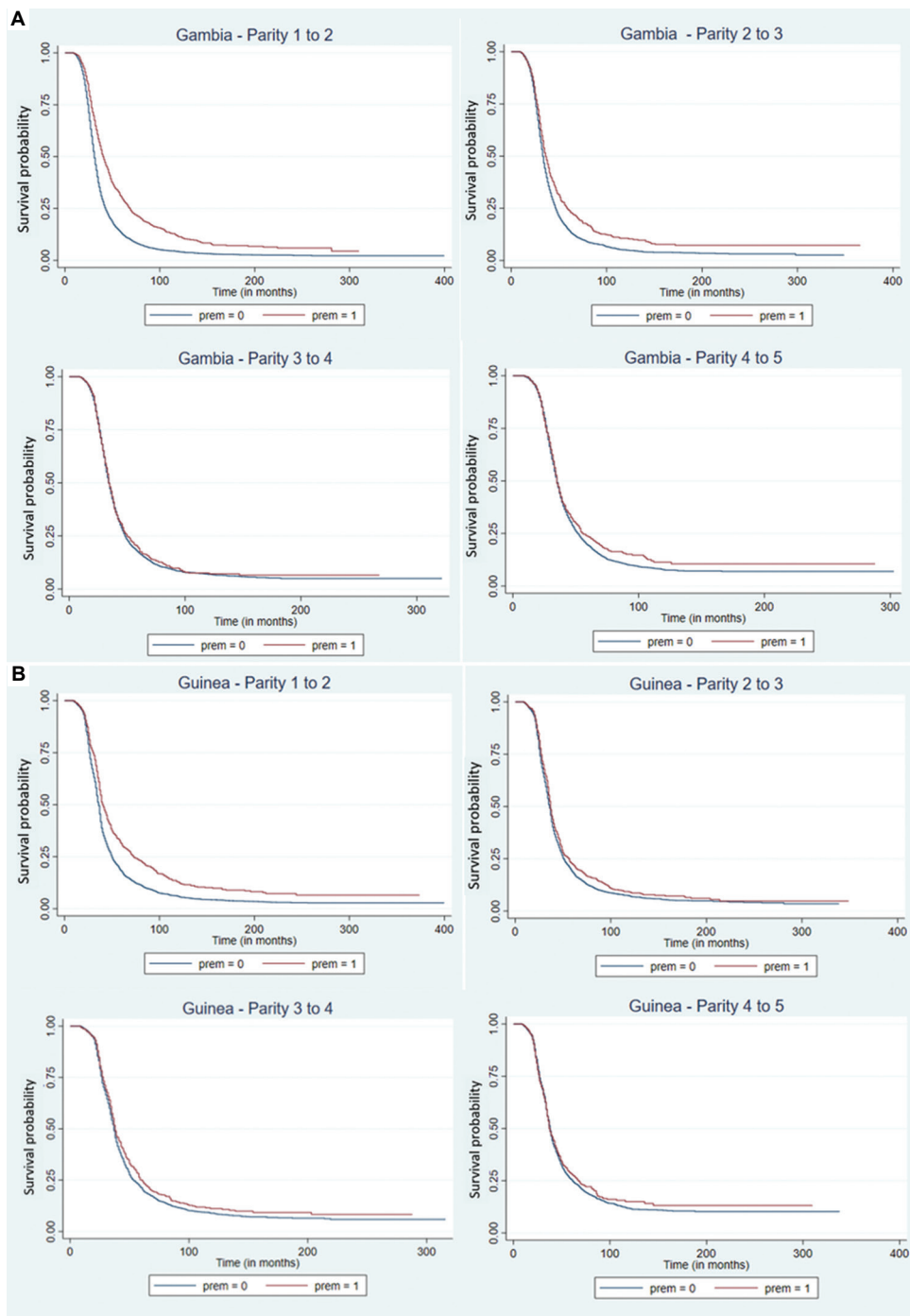
**Figure S9.** Comparison of parity progression ratios among women with premarital first births and marital childbearing in (A) Cameroon and (B) Ethiopia, stratified by specific parity

Note: Prem = 1 indicates premarital first birth and prem = 0 indicates marital first birth.



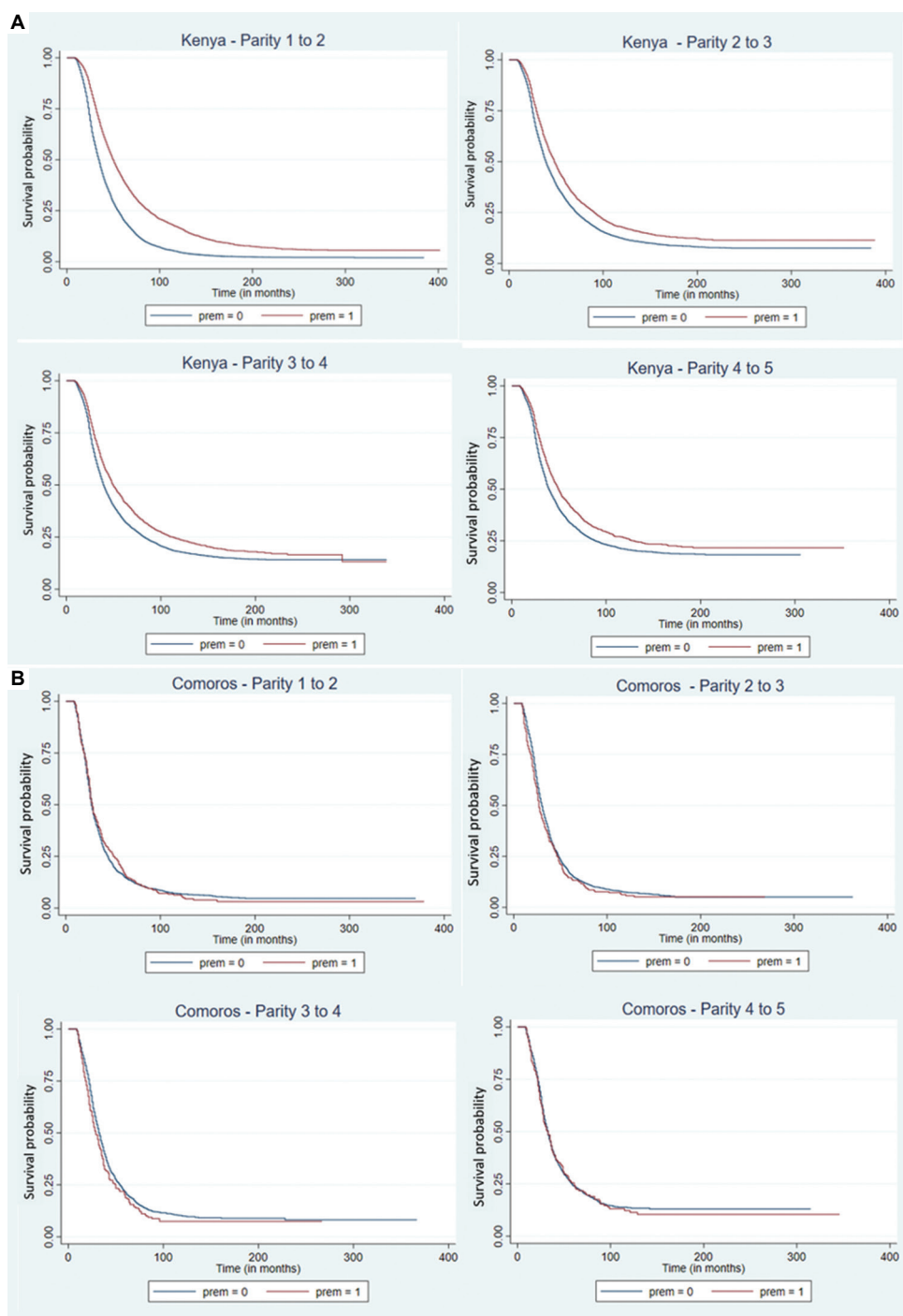
**Figure S10.** Comparison of parity progression ratios among women with premarital first births and marital childbearing in (A) Gabon and (B) Ghana, stratified by specific parity

Note: Prem = 1 indicates premarital first birth and prem = 0 indicates marital first birth.



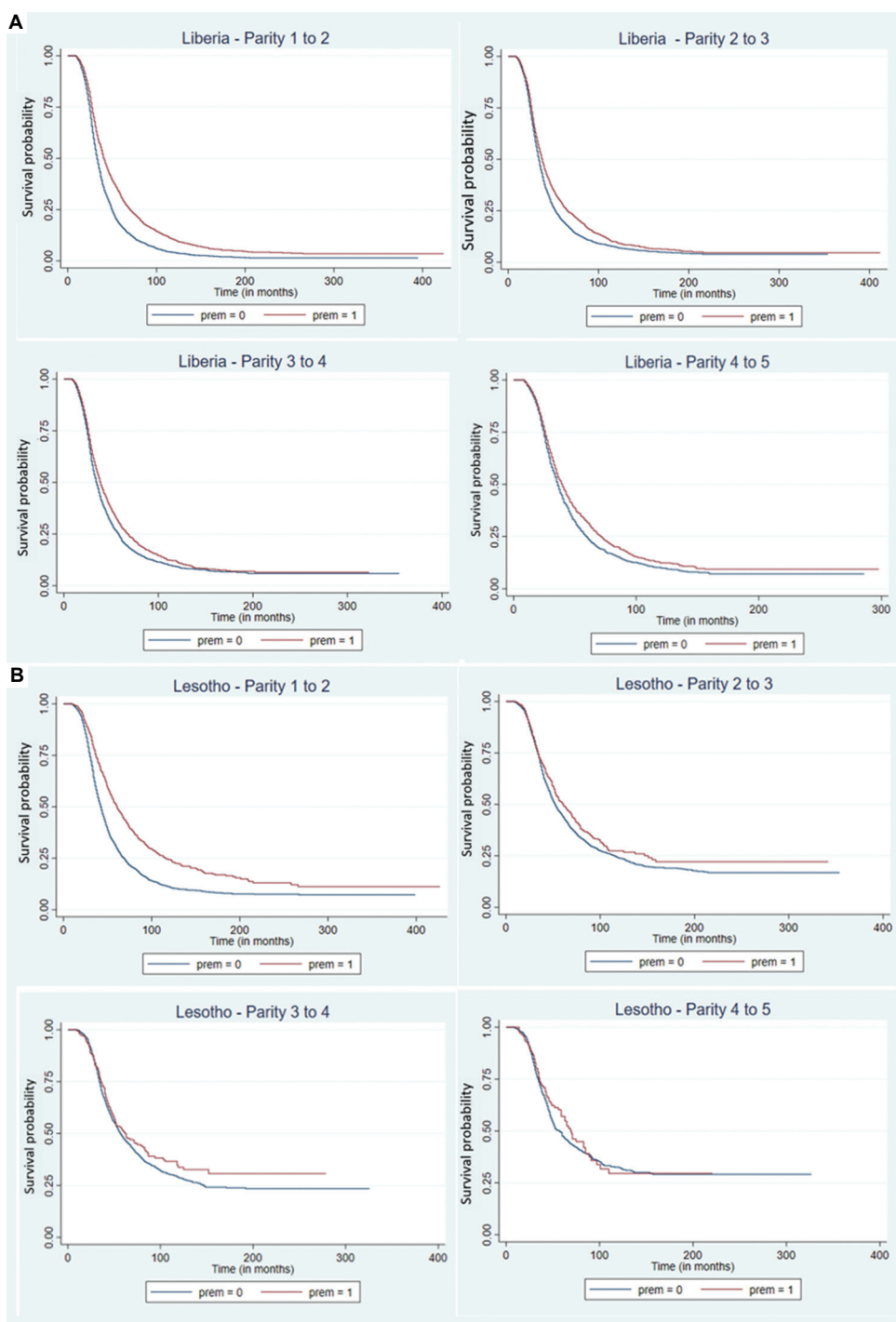
**Figure S11.** Comparison of parity progression ratios among women with premarital first births and marital childbearing in (A) Gambia and (B) Guinea, stratified by specific parity

Note: Prem = 1 indicates premarital first birth and prem = 0 indicates marital first birth.

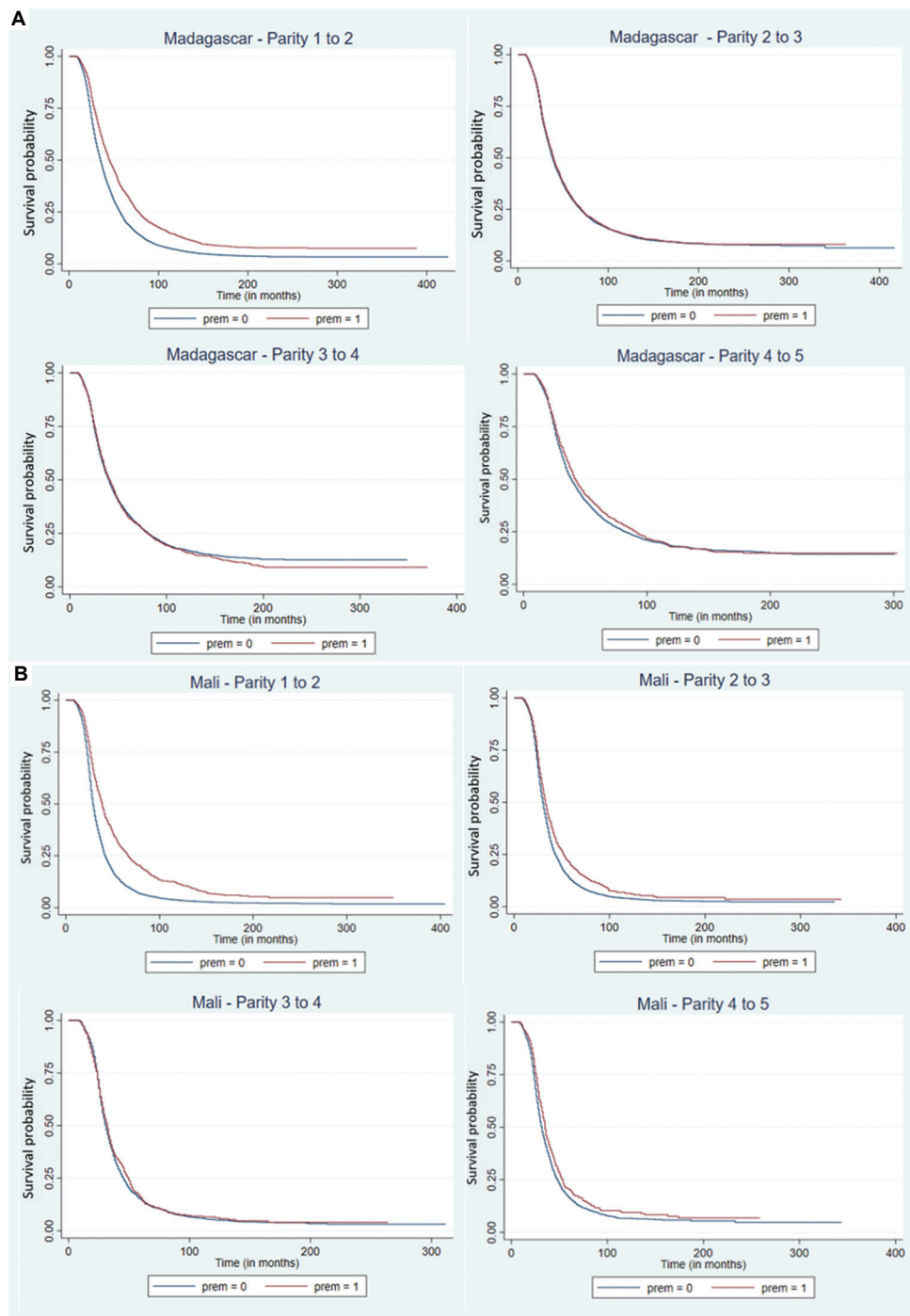


**Figure S12.** Comparison of parity progression ratios among women with premarital first births and marital childbearing in (A) Kenya and (B) Comoros, stratified by specific parity

Note: Prem = 1 indicates premarital first birth and prem = 0 indicates marital first birth.

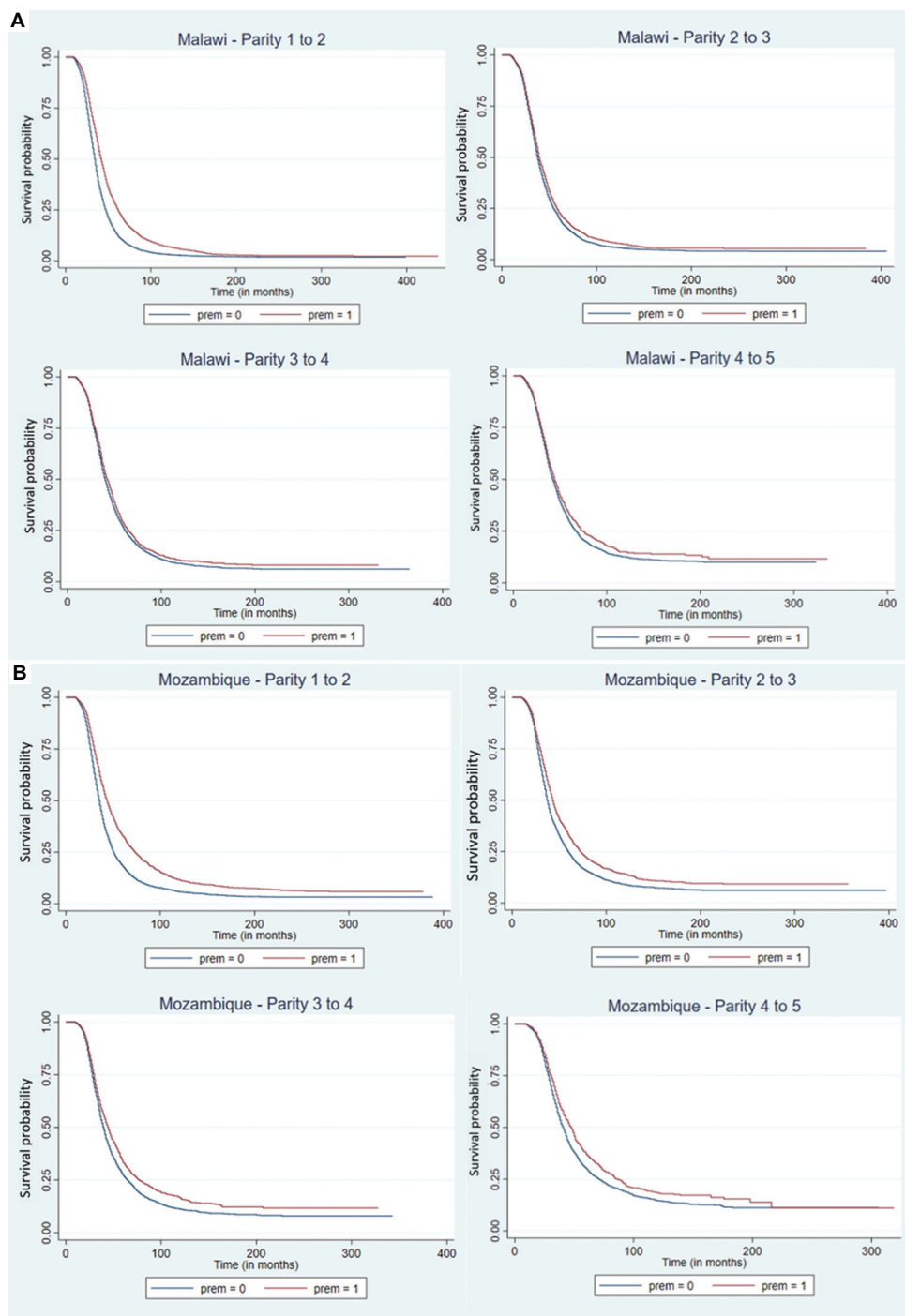


**Figure S13.** Comparison of parity progression ratios among women with premarital first births and marital childbearing in (A) Liberia and (B) Lesotho, stratified by specific parity  
Note: Prem = 1 indicates premarital first birth and prem = 0 indicates marital first birth.



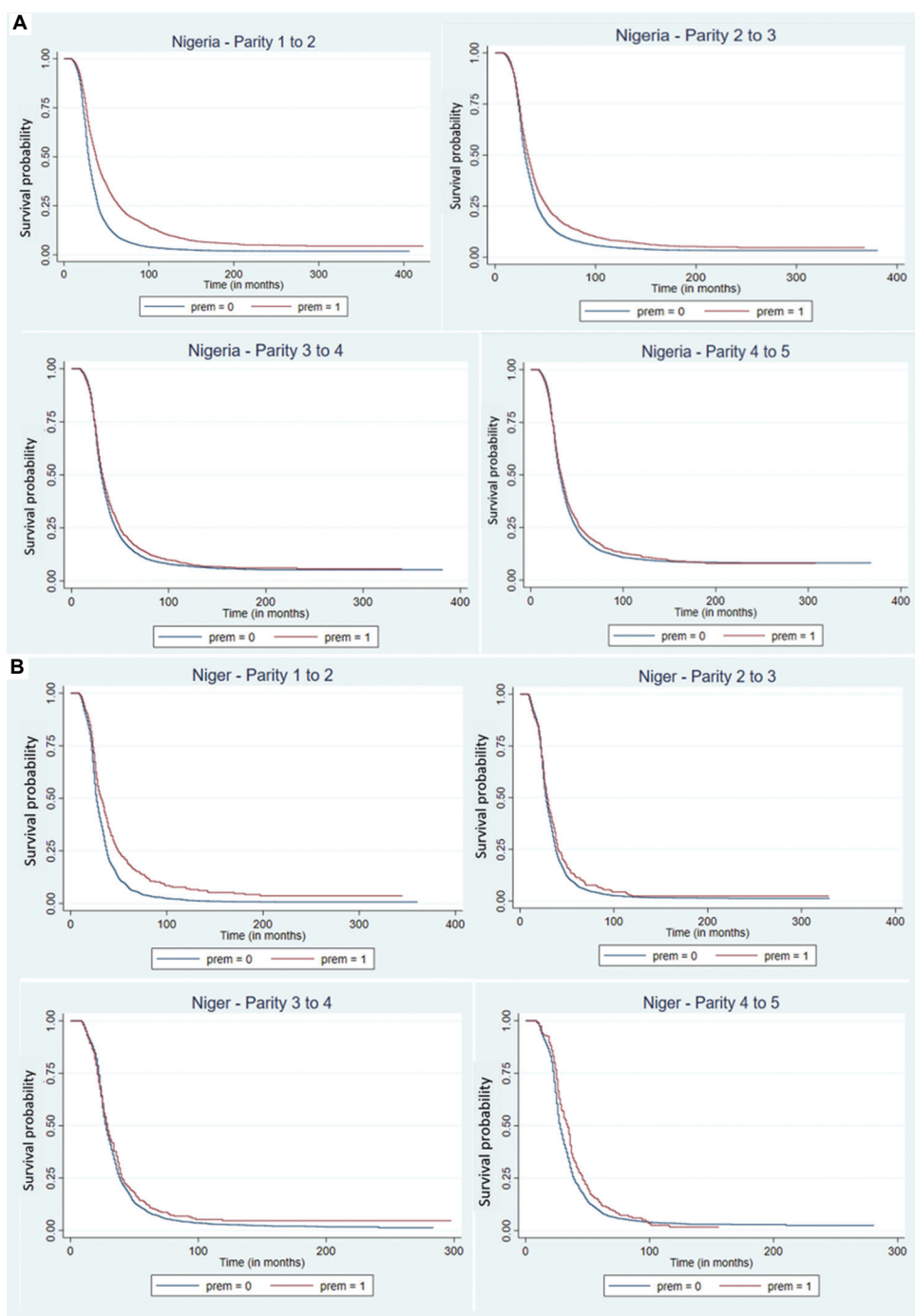
**Figure S14.** Comparison of parity progression ratios among women with premarital first births and marital childbearing in (A) Madagascar and (B) Mali, stratified by specific parity

Note: Prem = 1 indicates premarital first birth and prem = 0 indicates marital first birth.



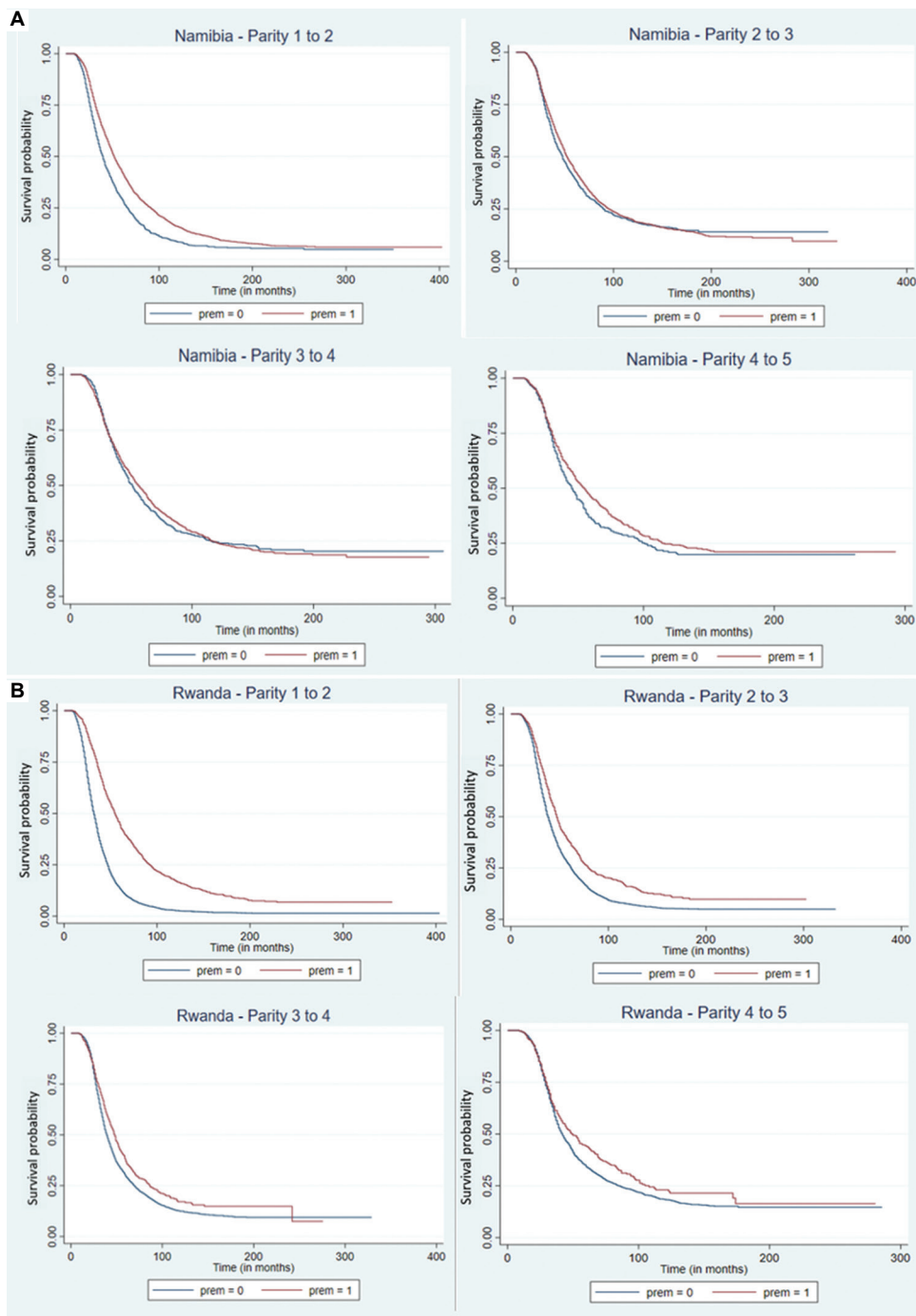
**Figure S15.** Comparison of parity progression ratios among women with premarital first births and marital childbearing in (A) Malawi and (B) Mozambique, stratified by specific parity

Note: Prem = 1 indicates premarital first birth and prem = 0 indicates marital first birth.



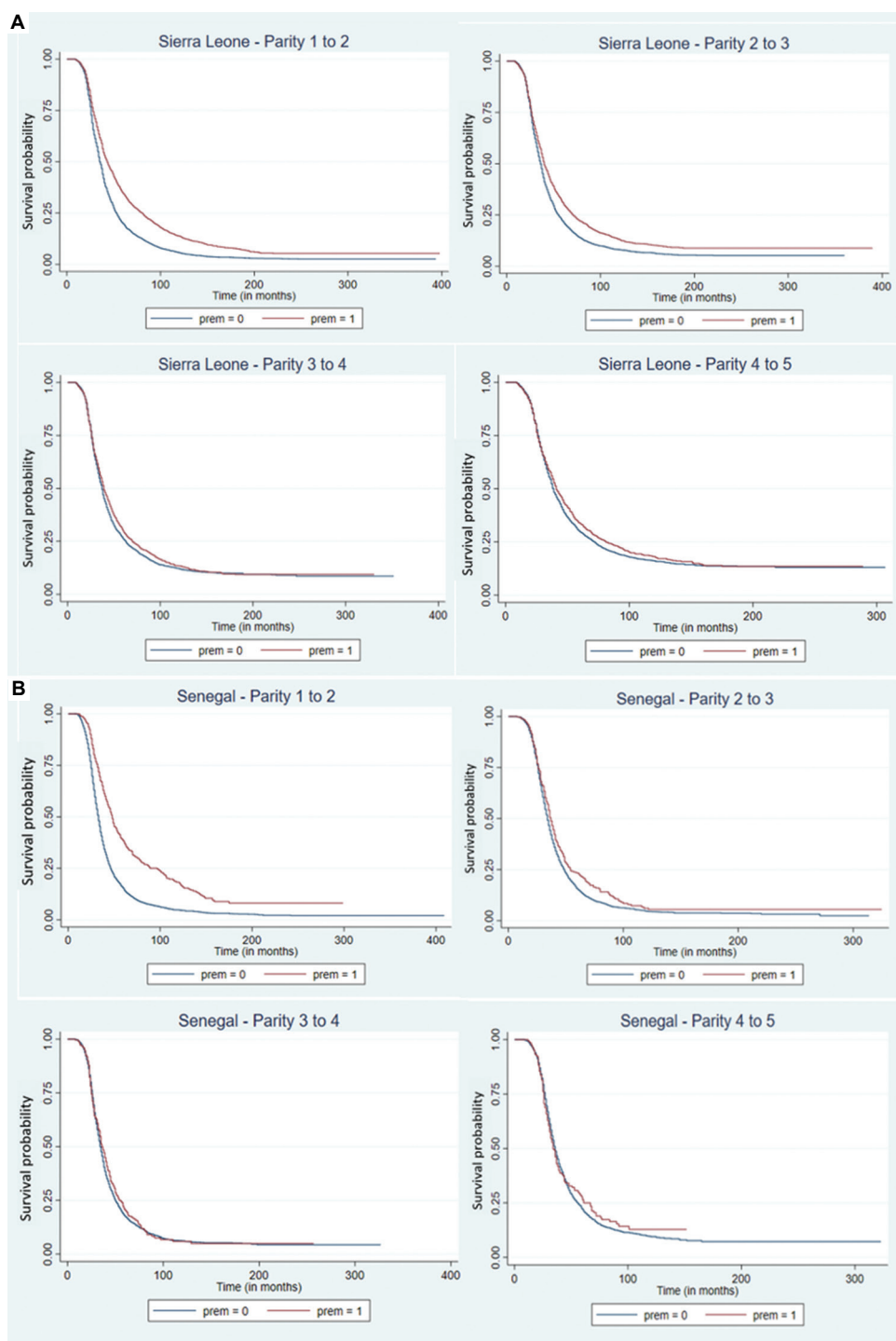
**Figure S16.** Comparison of parity progression ratios among women with premarital first births and marital childbearing in (A) Nigeria and (B) Niger, stratified by specific parity

Note: Prem = 1 indicates premarital first birth and prem = 0 indicates marital first birth.

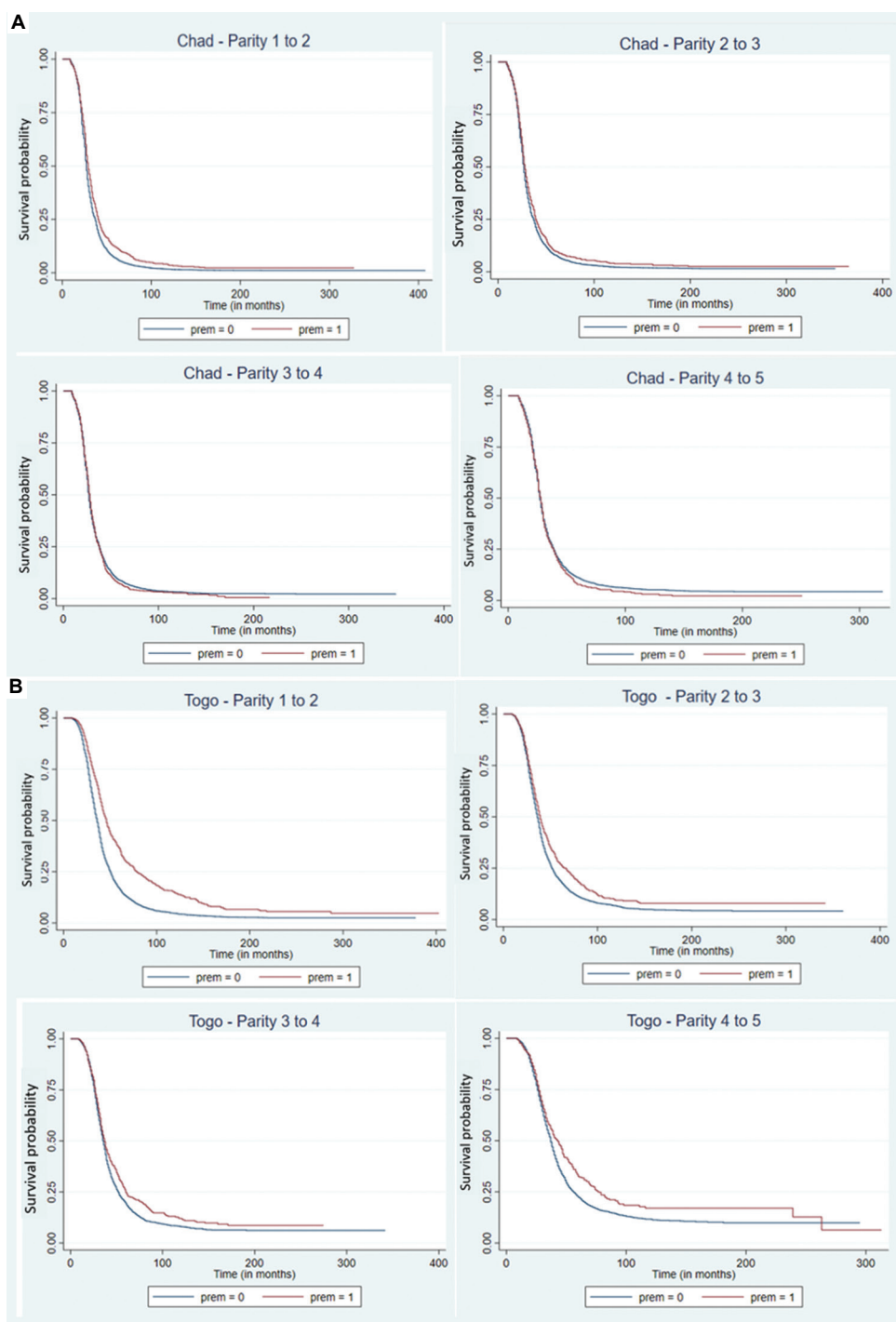


**Figure S17.** Comparison of parity progression ratios among women with premarital first births and marital childbearing in (A) Namibia and (B) Rwanda, stratified by specific parity

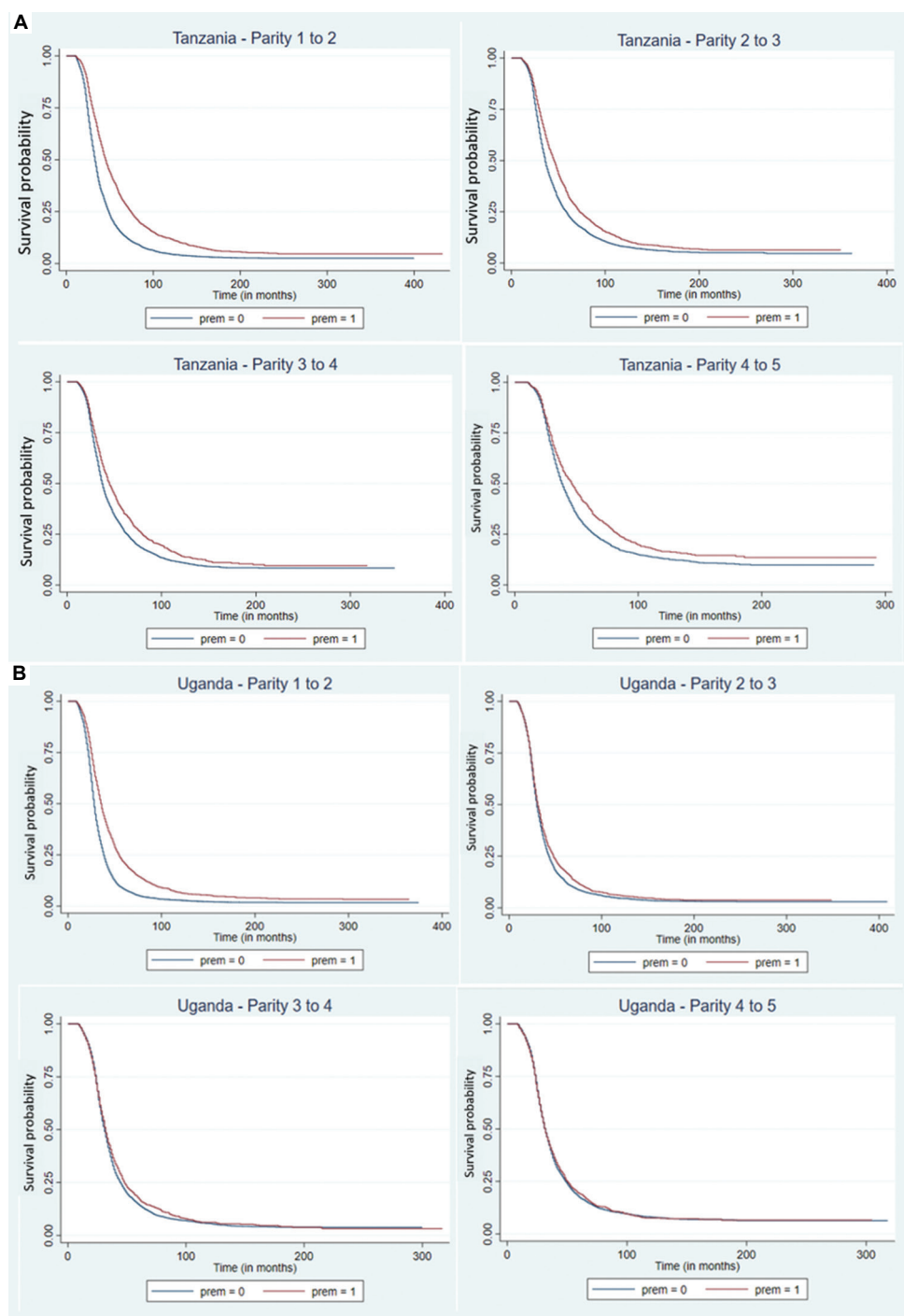
Note: Prem = 1 indicates premarital first birth and prem = 0 indicates marital first birth.



**Figure S18.** Comparison of parity progression ratios among women with premarital first births and marital childbearing in (A) Sierra Leone and (B) Senegal, stratified by specific parity  
 Note: Prem = 1 indicates premarital first birth and prem = 0 indicates marital first birth.

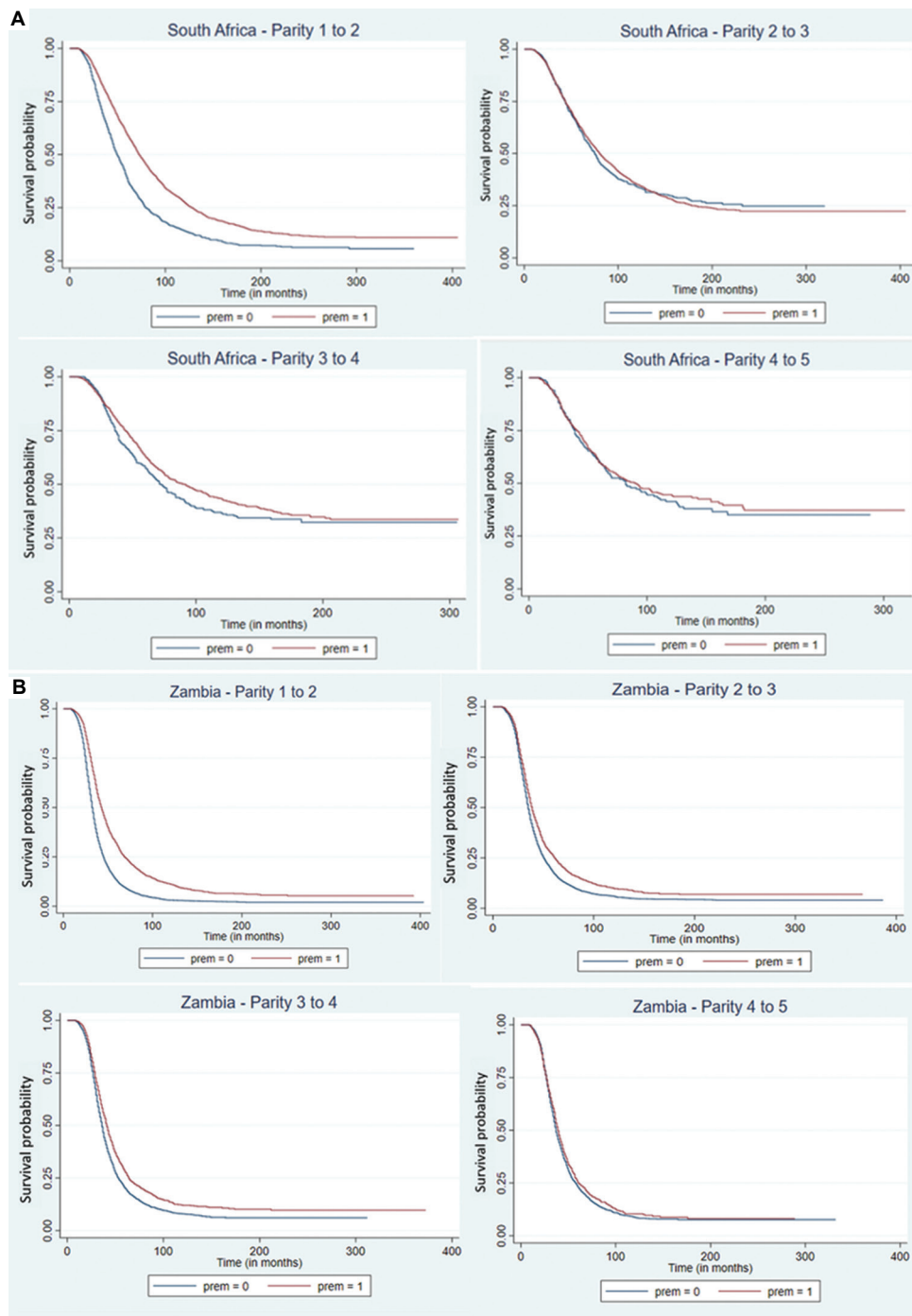


**Figure S19.** Comparison of parity progression ratios among women with premarital first births and marital childbearing in (A) Chad and (B) Togo, stratified by specific parity  
Note: Prem = 1 indicates premarital first birth and prem = 0 indicates marital first birth.



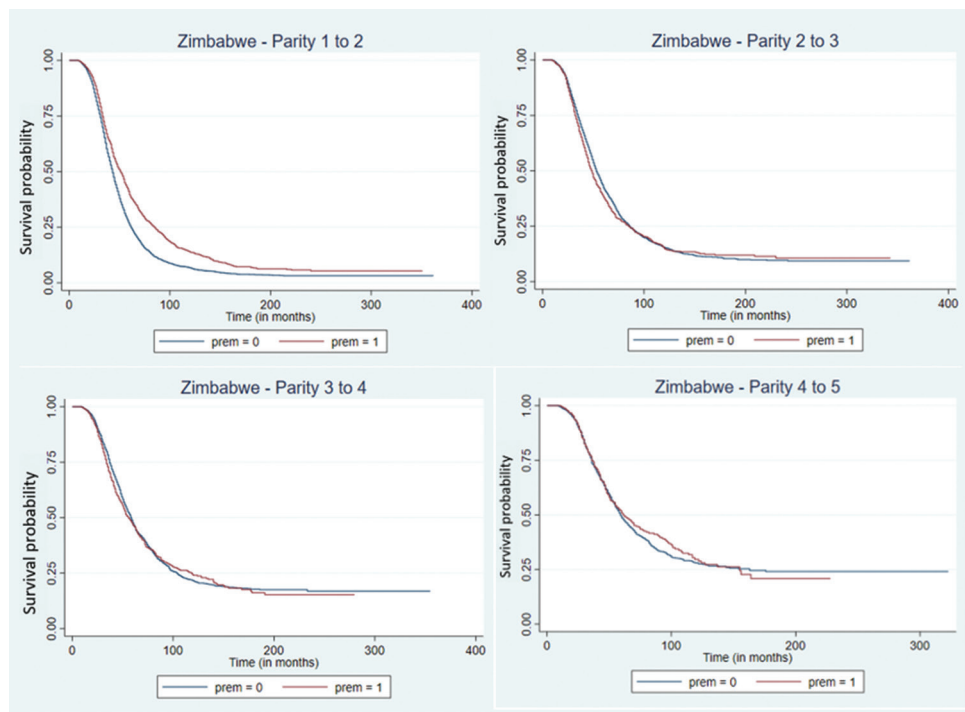
**Figure S20.** Comparison of parity progression ratios among women with premarital first births and marital childbearing in (A) Tanzania and (B) Uganda, stratified by specific parity

Note: Prem = 1 indicates premarital first birth and prem = 0 indicates marital first birth.



**Figure S21.** Comparison of parity progression ratios among women with premarital first births and marital childbearing in (A) South Africa and (B) Zambia, stratified by specific parity

Note: Prem = 1 indicates premarital first birth and prem = 0 indicates marital first birth.



**Figure S22.** Comparison of parity progression ratios among women with premarital first births and marital childbearing in Zimbabwe, stratified by specific parity  
Note: Prem = 1 indicates premarital first birth and prem = 0 indicates marital first birth.

Table S1. Country-specific COM–Poisson regression estimates for fertility (children ever born)

Variables	Angola	Benin	Burkina Faso	Burundi	Cameroon	Chad	Comoros
Constant	1.593 (0.037)*** ( $p < 0.001/q < 0.001$ )	1.836 (0.040)*** ( $p < 0.001/q < 0.001$ )	1.859 (0.044)*** ( $p < 0.001/q < 0.001$ )	1.493 (0.051)*** ( $p < 0.001/q < 0.001$ )	1.420 (0.040)*** ( $p < 0.001/q < 0.001$ )	1.469 (0.030)*** ( $p < 0.001/q < 0.001$ )	1.501 (0.072)*** ( $p < 0.001/q < 0.001$ )
Premarital status (ref: marital)							
Premarital	-0.141 (0.013)*** ( $p < 0.001/q < 0.001$ )	-0.065 (0.017)*** ( $p < 0.001/q < 0.001$ )	-0.028 (0.019) (0.139/0.139)	-0.299 (0.024)*** ( $p < 0.001/q < 0.001$ )	-0.191 (0.015)*** ( $p < 0.001/q < 0.001$ )	0.065 (0.019)*** ( $p < 0.001/q < 0.001$ )	0.099 (0.036)*** ( $p < 0.001/q < 0.001$ )
Maternal age (ref: <24)							
25–34	1.240 (0.025)*** ( $p < 0.001/q < 0.001$ )	1.460 (0.030)*** ( $p < 0.001/q < 0.001$ )	1.545 (0.031)*** ( $p < 0.001/q < 0.001$ )	1.399 (0.032)*** ( $p < 0.001/q < 0.001$ )	1.085 (0.027)*** ( $p < 0.001/q < 0.001$ )	1.278 (0.022)*** ( $p < 0.001/q < 0.001$ )	0.946 (0.049)*** ( $p < 0.001/q < 0.001$ )
35+	2.003 (0.033)*** ( $p < 0.001/q < 0.001$ )	2.388 (0.039)*** ( $p < 0.001/q < 0.001$ )	2.632 (0.040)*** ( $p < 0.001/q < 0.001$ )	2.466 (0.042)*** ( $p < 0.001/q < 0.001$ )	1.747 (0.033)*** ( $p < 0.001/q < 0.001$ )	2.045 (0.029)*** ( $p < 0.001/q < 0.001$ )	1.600 (0.059)*** ( $p < 0.001/q < 0.001$ )
Maternal education (ref: no education)							
Primary	0.052 (0.015)*** ( $p < 0.001/q < 0.001$ )	-0.176 (0.019)*** ( $p < 0.001/q < 0.001$ )	-0.226 (0.022)*** ( $p < 0.001/q < 0.001$ )	-0.132 (0.015)*** ( $p < 0.001/q < 0.001$ )	-0.058 (0.018)*** ( $p < 0.001/q < 0.001$ )	0.007 (0.013) (0.596/0.596)	-0.183 (0.030)*** ( $p < 0.001/q < 0.001$ )
Secondary+	-0.273 (0.021)*** ( $p < 0.001/q < 0.001$ )	-0.438 (0.025)*** ( $p < 0.001/q < 0.001$ )	-0.610 (0.026)*** ( $p < 0.001/q < 0.001$ )	-0.436 (0.029)*** ( $p < 0.001/q < 0.001$ )	-0.261 (0.021)*** ( $p < 0.001/q < 0.001$ )	-0.317 (0.023)*** ( $p < 0.001/q < 0.001$ )	-0.333 (0.034)*** ( $p < 0.001/q < 0.001$ )
Wealth index (ref: poor)							
Middle	-0.075 (0.019)*** ( $p < 0.001/q < 0.001$ )	-0.126 (0.018)*** ( $p < 0.001/q < 0.001$ )	-0.069 (0.018)*** ( $p < 0.001/q < 0.001$ )	0.106 (0.018)*** ( $p < 0.001/q < 0.001$ )	-0.056 (0.019)*** ( $p < 0.001/q < 0.001$ )	0.036 (0.013)** (0.006/0.007)	-0.162 (0.032)*** ( $p < 0.001/q < 0.001$ )
Rich	-0.168 (0.022)*** ( $p < 0.001/q < 0.001$ )	-0.301 (0.017)*** ( $p < 0.001/q < 0.001$ )	-0.204 (0.019)*** ( $p < 0.001/q < 0.001$ )	0.137 (0.016)*** ( $p < 0.001/q < 0.001$ )	-0.173 (0.023)*** ( $p < 0.001/q < 0.001$ )	0.011 (0.012) (0.330/0.351)	-0.249 (0.030)*** ( $p < 0.001/q < 0.001$ )
Age at birth (ref: <18)							
18–23	-0.332 (0.015)*** ( $p < 0.001/q < 0.001$ )	-0.346 (0.018)*** ( $p < 0.001/q < 0.001$ )	-0.375 (0.017)*** ( $p < 0.001/q < 0.001$ )	-0.272 (0.022)*** ( $p < 0.001/q < 0.001$ )	-0.295 (0.017)*** ( $p < 0.001/q < 0.001$ )	-0.292 (0.013)*** ( $p < 0.001/q < 0.001$ )	-0.277 (0.032)*** ( $p < 0.001/q < 0.001$ )
24–29	-0.921 (0.030)*** ( $p < 0.001/q < 0.001$ )	-0.873 (0.029)*** ( $p < 0.001/q < 0.001$ )	-0.955 (0.030)*** ( $p < 0.001/q < 0.001$ )	-0.744 (0.035)*** ( $p < 0.001/q < 0.001$ )	-0.799 (0.030)*** ( $p < 0.001/q < 0.001$ )	-0.674 (0.026)*** ( $p < 0.001/q < 0.001$ )	-0.692 (0.054)*** ( $p < 0.001/q < 0.001$ )
30+	-1.688 (0.058)*** ( $p < 0.001/q < 0.001$ )	-1.605 (0.064)*** ( $p < 0.001/q < 0.001$ )	-1.776 (0.066)*** ( $p < 0.001/q < 0.001$ )	-1.669 (0.063)*** ( $p < 0.001/q < 0.001$ )	-1.420 (0.066)*** ( $p < 0.001/q < 0.001$ )	-1.136 (0.060)*** ( $p < 0.001/q < 0.001$ )	-1.290 (0.084)*** ( $p < 0.001/q < 0.001$ )
Contraceptive (ref: not using)							
Using	-0.031 (0.025) (0.215/0.229)	0.133 (0.019)*** ( $p < 0.001/q < 0.001$ )	0.075 (0.014)*** ( $p < 0.001/q < 0.001$ )	-0.005 (0.016) (0.753/0.753)	0.093 (0.018)*** ( $p < 0.001/q < 0.001$ )	0.098 (0.024)*** ( $p < 0.001/q < 0.001$ )	0.091 (0.033)** (0.006/0.008)
Age at sexual debut (ref: <15)							
15–17	0.000 (0.015) (0.991/0.991)	-0.112 (0.019)*** ( $p < 0.001/q < 0.001$ )	-0.049 (0.021)* (0.020/0.023)	-0.045 (0.034) (0.182/0.193)	-0.117 (0.017)*** ( $p < 0.001/q < 0.001$ )	-0.081 (0.011)*** ( $p < 0.001/q < 0.001$ )	-0.026 (0.035) (0.462/0.461)
18–23	-0.032 (0.020) (0.102/0.116)	-0.204 (0.024)*** ( $p < 0.001/q < 0.001$ )	-0.141 (0.025)*** ( $p < 0.001/q < 0.001$ )	-0.164 (0.036)*** ( $p < 0.001/q < 0.001$ )	-0.170 (0.022)*** ( $p < 0.001/q < 0.001$ )	-0.182 (0.017)*** ( $p < 0.001/q < 0.001$ )	-0.061 (0.041) (0.143/0.152)

(Cont'd...)

Table S1. (Continued)

Variables	Angola	Benin	Burkina Faso	Burundi	Cameroon	Chad	Comoros
24+	-0.105 (0.045) (0.019/0.023)	-0.243 (0.070)*** ( $p < 0.001/q < 0.001$ )	-0.164 (0.086)* (0.0582/0.062)	-0.253 (0.049)*** ( $p < 0.001/q < 0.001$ )	-0.286 (0.082)*** ( $p < 0.001/q < 0.001$ )	-0.167 (0.039)*** ( $p < 0.001/q < 0.001$ )	-0.095 (0.061) (0.118/0.134)
Place of residence (ref: urban)							
Rural	0.048 (0.017)** (0.006/0.008)	0.099 (0.015)*** ( $p < 0.001/q < 0.001$ )	0.246 (0.019)*** ( $p < 0.001/q < 0.001$ )	0.161 (0.021)*** ( $p < 0.001/q < 0.001$ )	0.151 (0.018)*** ( $p < 0.001/q < 0.001$ )	0.034 (0.013)* (0.011/0.013)	0.052 (0.025)* (0.040/0.048)
<i>n</i>	11,004	11,569	12,779	10,501	9,218	13,925	2,750
Model evaluation							
Poisson dispersion	0.6308193	0.5436938	0.4748808	0.5639696	0.6963955	0.6652705	0.724249
LRT statistic	(1,114.86)*** ( $p < 0.001/q < 0.001$ )	(1,918.12)*** ( $p < 0.001/q < 0.001$ )	(3,009.35)*** ( $p < 0.001/q < 0.001$ )	(1,562.09)*** ( $p < 0.001/q < 0.001$ )	(585.52)*** ( $p < 0.001/q < 0.001$ )	(1,178.12)*** ( $p < 0.001/q < 0.001$ )	(153.31)*** ( $p < 0.001/q < 0.001$ )
AIC (Poisson)	40,112.91	41,694.43	44,870	38,601.43	33,818.82	54,795.75	10,423.26
AIC (COM-Poisson)	39,000.05	39,778.31	41,862.66	37,041.34	33,235.30	53,619.62	10,271.95
BIC (COM-Poisson)	39,124.25	39,903.37	41,989.40	37,164.75	33,356.49	53,747.83	10,372.57
Pseudo-R <sup>2</sup>	0.21	0.235	0.248	0.259	0.196	0.213	0.225
Dispersion	1.731	2.027	2.348	1.942	1.544	1.623	1.492
Variables	Congo	Congo DRC	Côte d'Ivoire	Ethiopia	Gabon	Gambia	Ghana
Constant	1.494 (0.048)*** ( $p < 0.001/q < 0.001$ )	1.163 (0.031)*** ( $p < 0.001/q < 0.001$ )	1.690 (0.040)*** ( $p < 0.001/q < 0.001$ )	1.125 (0.039)*** ( $p < 0.001/q < 0.001$ )	1.257 (0.050)*** ( $p < 0.001/q < 0.001$ )	1.498 (0.048)*** ( $p < 0.001/q < 0.001$ )	1.718 (0.049)*** ( $p < 0.001/q < 0.001$ )
Premarital status (ref: marital)							
Premarital	-0.105 (0.016)*** ( $p < 0.001/q < 0.001$ )	-0.227 (0.016)*** ( $p < 0.001/q < 0.001$ )	-0.161 (0.014)*** ( $p < 0.001/q < 0.001$ )	-0.011 (0.022) (0.627/0.627)	-0.141 (0.017)*** ( $p < 0.001/q < 0.001$ )	-0.125 (0.023)*** ( $p < 0.001/q < 0.001$ )	-0.145 (0.018)*** ( $p < 0.001/q < 0.001$ )
Maternal age (ref: <24)							
25-34	1.224 (0.030)*** ( $p < 0.001/q < 0.001$ )	1.207 (0.022)*** ( $p < 0.001/q < 0.001$ )	1.232 (0.029)*** ( $p < 0.001/q < 0.001$ )	1.148 (0.028)*** ( $p < 0.001/q < 0.001$ )	0.890 (0.030)*** ( $p < 0.001/q < 0.001$ )	1.414 (0.037)*** ( $p < 0.001/q < 0.001$ )	1.371 (0.036)*** ( $p < 0.001/q < 0.001$ )
35+	2.007 (0.038)*** ( $p < 0.001/q < 0.001$ )	1.951 (0.028)*** ( $p < 0.001/q < 0.001$ )	2.069 (0.036)*** ( $p < 0.001/q < 0.001$ )	1.877 (0.035)*** ( $p < 0.001/q < 0.001$ )	1.443 (0.035)*** ( $p < 0.001/q < 0.001$ )	2.331 (0.047)*** ( $p < 0.001/q < 0.001$ )	2.383 (0.045)*** ( $p < 0.001/q < 0.001$ )
Maternal education (ref: no education)							
Primary	-0.080 (0.025)*** ( $p < 0.001/q < 0.001$ )	0.012 (0.013) (0.370/0.370)	-0.188 (0.018)*** ( $p < 0.001/q < 0.001$ )	-0.277 (0.017)*** ( $p < 0.001/q < 0.001$ )	0.058 (0.032)* (0.067/0.067)	-0.119 (0.022)*** ( $p < 0.001/q < 0.001$ )	-0.191 (0.022)*** ( $p < 0.001/q < 0.001$ )
Secondary+	-0.261 (0.025)*** ( $p < 0.001/q < 0.001$ )	-0.170 (0.015)*** ( $p < 0.001/q < 0.001$ )	-0.430 (0.025)*** ( $p < 0.001/q < 0.001$ )	-0.538 (0.029)*** ( $p < 0.001/q < 0.001$ )	-0.154 (0.031)*** ( $p < 0.001/q < 0.001$ )	-0.315 (0.023)*** ( $p < 0.001/q < 0.001$ )	-0.396 (0.021)*** ( $p < 0.001/q < 0.001$ )
Wealth index (ref: poor)							
Middle	-0.171 (0.027)*** ( $p < 0.001/q < 0.001$ )	0.069 (0.013)*** ( $p < 0.001/q < 0.001$ )	-0.154 (0.018)*** ( $p < 0.001/q < 0.001$ )	-0.100 (0.018)*** ( $p < 0.001/q < 0.001$ )	-0.151 (0.024)*** ( $p < 0.001/q < 0.001$ )	-0.098 (0.023)*** ( $p < 0.001/q < 0.001$ )	-0.174 (0.023)*** ( $p < 0.001/q < 0.001$ )

(Cont'd...)

Table S1. (Continued)

Variables	Congo	Congo DRC	Côte d'Ivoire	Ethiopia	Gabon	Gambia	Ghana
Rich	-0.312 (0.027)*** (p<0.001/q<0.001)	0.037 (0.015)* (0.012/0.016)	-0.384 (0.022)*** (p<0.001/q<0.001)	-0.117 (0.017)*** (p<0.001/q<0.001)	-0.191 (0.022)*** (p<0.001/q<0.001)	-0.222 (0.025)*** (p<0.001/q<0.001)	-0.332 (0.024)*** (p<0.001/q<0.001)
Age at birth (ref. <18)							
18-23	-0.259 (0.017)*** (p<0.001/q<0.001)	-0.303 (0.013)*** (p<0.001/q<0.001)	-0.312 (0.016)*** (p<0.001/q<0.001)	-0.301 (0.016)*** (p<0.001/q<0.001)	-0.263 (0.018)*** (p<0.001/q<0.001)	-0.259 (0.020)*** (p<0.001/q<0.001)	-0.308 (0.021)*** (p<0.001/q<0.001)
24-29	-0.838 (0.036)*** (p<0.001/q<0.001)	-0.846 (0.025)*** (p<0.001/q<0.001)	-0.896 (0.030)*** (p<0.001/q<0.001)	-0.795 (0.034)*** (p<0.001/q<0.001)	-0.782 (0.035)*** (p<0.001/q<0.001)	-0.878 (0.042)*** (p<0.001/q<0.001)	-0.865 (0.032)*** (p<0.001/q<0.001)
30+	-1.399 (0.084)*** (p<0.001/q<0.001)	-1.457 (0.050)*** (p<0.001/q<0.001)	-1.649 (0.058)*** (p<0.001/q<0.001)	-1.277 (0.069)*** (p<0.001/q<0.001)	-1.314 (0.059)*** (p<0.001/q<0.001)	-1.413 (0.093)*** (p<0.001/q<0.001)	-1.621 (0.061)*** (p<0.001/q<0.001)
Contraceptive (ref: not using)							
Using	0.045 (0.021)* (0.030/0.032)	0.062 (0.020)** (0.002/0.002)	0.132 (0.017)*** (p<0.001/q<0.001)	-0.087 (0.015)*** (p<0.001/q<0.001)	0.058 (0.022)** (0.008/0.009)	0.230 (0.019)*** (p<0.001/q<0.001)	0.167 (0.017)*** (p<0.001/q<0.001)
Age at sexual debut (ref: <15)							
15-17	-0.107 (0.017)*** (p<0.001/q<0.001)	0.011 (0.012) (0.365/0.370)	-0.138 (0.016)*** (p<0.001/q<0.001)	-0.011 (0.016) (0.493/0.559)	-0.079 (0.018)*** (p<0.001/q<0.001)	-0.085 (0.023)*** (p<0.001/q<0.001)	-0.062 (0.024)* (0.011/0.012)
18-23	-0.135 (0.026)*** (p<0.001/q<0.001)	-0.036 (0.016)* (0.022/0.026)	-0.228 (0.023)*** (p<0.001/q<0.001)	-0.073 (0.021)*** (p<0.001/q<0.001)	-0.150 (0.027)*** (p<0.001/q<0.001)	-0.222 (0.029)*** (p<0.001/q<0.001)	-0.115 (0.027)*** (p<0.001/q<0.001)
24+	0.004 (0.112) (0.969/0.969)	0.060 (0.040) (0.135/0.152)	-0.351 (0.111)** (0.002/0.002)	-0.030 (0.049) (0.544/0.578)	-0.201 (0.103)* (0.051/0.054)	-0.301 (0.060)*** (p<0.001/q<0.001)	-0.074 (0.060) (0.213/0.213)
Place of residence (ref: urban)							
Rural	0.133 (0.023)*** (p<0.001/q<0.001)	0.103 (0.014)*** (p<0.001/q<0.001)	0.071 (0.017)*** (p<0.001/q<0.001)	0.390 (0.021)*** (p<0.001/q<0.001)	0.098 (0.018)*** (p<0.001/q<0.001)	0.146 (0.021)*** (p<0.001/q<0.001)	0.100 (0.018)*** (p<0.001/q<0.001)
n	8,702	13,904	10,809	10,054	6,823	7,639	10,046
Model evaluation							
Poisson dispersion	0.6142652	0.7059899	0.5935806	0.6680966	0.7573459	0.5825096	0.5263234
LRT statistic	(958.89)*** (p<0.001/q<0.001)	(843.99)*** (p<0.001/q<0.001)	(1,333.43)*** (p<0.001/q<0.001)	(770.90)*** (p<0.001/q<0.001)	(262.84)*** (p<0.001/q<0.001)	(1,031.80)*** (p<0.001/q<0.001)	(1,824.96)*** (p<0.001/q<0.001)
AIC (Poisson)	31,356.23	52,948.90	38,730.41	37,590.44	24,994.42	27,983.31	34,649.76
AIC (COM-Poisson)	30,399.35	52,106.91	37,398.98	36,821.53	24,733.58	26,953.51	32,826.80
BIC (COM-Poisson)	30,519.56	52,235.09	37,522.88	36,944.20	24,849.65	27,071.51	32,949.45
Pseudo-R <sup>2</sup>	0.201	0.209	0.216	0.217	0.16	0.247	0.235
Dispersion	1.778	1.519	1.842	1.605	1.406	1.884	2.123
<b>Variables</b>	<b>Guinea</b>	<b>Kenya</b>	<b>Lesotho</b>	<b>Liberia</b>	<b>Madagascar</b>	<b>Malawi</b>	<b>Mali</b>
Constant	1.311 (0.048)*** (p<0.001/q<0.001)	2.365 (0.036)*** (p<0.001/q<0.001)	1.765 (0.123)*** (p<0.001/q<0.001)	1.433 (0.050)*** (p<0.001/q<0.001)	1.521 (0.035)*** (p<0.001/q<0.001)	1.778 (0.037)*** (p<0.001/q<0.001)	1.404 (0.043)*** (p<0.001/q<0.001)

(Cont'd...)

Table S1. (Continued)

Variables	Guinea	Kenya	Lesotho	Liberia	Madagascar	Malawi	Mali
Premarital status (ref: marital)							
Premarital	-0.115 (0.022)*** (p<0.001/q<0.001)	-0.211 (0.012)*** (p<0.001/q<0.001)	-0.186 (0.035)*** (p<0.001/q<0.001)	-0.137 (0.017)*** (p<0.001/q<0.001)	-0.116 (0.014)*** (p<0.001/q<0.001)	-0.074 (0.015)*** (p<0.001/q<0.001)	-0.094 (0.020)*** (p<0.001/q<0.001)
Maternal age (ref: <24)							
25-34	1.212 (0.033)*** (p<0.001/q<0.001)	1.253 (0.022)*** (p<0.001/q<0.001)	1.266 (0.052)*** (p<0.001/q<0.001)	1.313 (0.037)*** (p<0.001/q<0.001)	1.132 (0.023)*** (p<0.001/q<0.001)	1.681 (0.025)*** (p<0.001/q<0.001)	1.300 (0.030)*** (p<0.001/q<0.001)
35+	1.979 (0.041)*** (p<0.001/q<0.001)	2.071 (0.026)*** (p<0.001/q<0.001)	2.325 (0.066)*** (p<0.001/q<0.001)	2.145 (0.047)*** (p<0.001/q<0.001)	1.969 (0.029)*** (p<0.001/q<0.001)	2.757 (0.034)*** (p<0.001/q<0.001)	2.102 (0.040)*** (p<0.001/q<0.001)
Maternal education (ref: no education)							
Primary	-0.100 (0.029)*** (p<0.001/q<0.001)	-0.557 (0.015)*** (p<0.001/q<0.001)	-0.084 (0.093) (0.370/0.428)	-0.075 (0.021)*** (p<0.001/q<0.001)	-0.127 (0.015)*** (p<0.001/q<0.001)	-0.199 (0.016)*** (p<0.001/q<0.001)	-0.072 (0.023)** (0.002/0.002)
Secondary+	-0.269 (0.031)*** (p<0.001/q<0.001)	-0.884 (0.019)*** (p<0.001/q<0.001)	-0.412 (0.097)*** (p<0.001/q<0.001)	-0.361 (0.026)*** (p<0.001/q<0.001)	-0.339 (0.020)*** (p<0.001/q<0.001)	-0.686 (0.023)*** (p<0.001/q<0.001)	-0.257 (0.027)*** (p<0.001/q<0.001)
Wealth index (ref: poor)							
Middle	-0.038 (0.020) # (0.060/0.060)	-0.229 (0.014)*** (p<0.001/q<0.001)	-0.196 (0.038)*** (p<0.001/q<0.001)	-0.098 (0.023)*** (p<0.001/q<0.001)	-0.139 (0.016)*** (p<0.001/q<0.001)	-0.034 (0.016)* (0.033/0.033)	-0.055 (0.019)** (0.003/0.003)
Rich	-0.095 (0.026)*** (p<0.001/q<0.001)	-0.466 (0.017)*** (p<0.001/q<0.001)	-0.421 (0.040)*** (p<0.001/q<0.001)	-0.261 (0.029)*** (p<0.001/q<0.001)	-0.364 (0.017)*** (p<0.001/q<0.001)	-0.112 (0.015)*** (p<0.001/q<0.001)	-0.188 (0.020)*** (p<0.001/q<0.001)
Age at birth (ref: <18)							
18-23	-0.293 (0.019)*** (p<0.001/q<0.001)	-0.327 (0.013)*** (p<0.001/q<0.001)	-0.369 (0.040)*** (p<0.001/q<0.001)	-0.281 (0.020)*** (p<0.001/q<0.001)	-0.275 (0.015)*** (p<0.001/q<0.001)	-0.329 (0.014)*** (p<0.001/q<0.001)	-0.319 (0.017)*** (p<0.001/q<0.001)
24-29	-0.797 (0.033)*** (p<0.001/q<0.001)	-0.812 (0.023)*** (p<0.001/q<0.001)	-1.054 (0.068)*** (p<0.001/q<0.001)	-0.832 (0.043)*** (p<0.001/q<0.001)	-0.748 (0.028)*** (p<0.001/q<0.001)	-0.997 (0.034)*** (p<0.001/q<0.001)	-0.798 (0.034)*** (p<0.001/q<0.001)
30+	-1.643 (0.065)*** (p<0.001/q<0.001)	-1.462 (0.050)*** (p<0.001/q<0.001)	-1.785 (0.125)*** (p<0.001/q<0.001)	-1.500 (0.092)*** (p<0.001/q<0.001)	-1.388 (0.057)*** (p<0.001/q<0.001)	-1.920 (0.082)*** (p<0.001/q<0.001)	-1.473 (0.063)*** (p<0.001/q<0.001)
Contraceptive (ref: not using)							
Using	0.089 (0.025)*** (p<0.001/q<0.001)	0.047 (0.011)*** (p<0.001/q<0.001)	0.051 (0.028) # (0.069/0.070)	0.094 (0.018)*** (p<0.001/q<0.001)	-0.022 (0.012) # (0.071/0.071)	0.157 (0.012)*** (p<0.001/q<0.001)	0.103 (0.019)*** (p<0.001/q<0.001)
Age at sexual debut (ref: <15)							
15-17	-0.066 (0.018)*** (p<0.001/q<0.001)	-0.076 (0.014)*** (p<0.001/q<0.001)	0.034 (0.054) (0.523/0.556)	-0.093 (0.020)*** (p<0.001/q<0.001)	-0.121 (0.016)*** (p<0.001/q<0.001)	-0.089 (0.015)*** (p<0.001/q<0.001)	-0.069 (0.018)*** (p<0.001/q<0.001)
18-23	-0.140 (0.025)*** (p<0.001/q<0.001)	-0.183 (0.017)*** (p<0.001/q<0.001)	-0.052 (0.059) (0.377/0.428)	-0.211 (0.032)*** (p<0.001/q<0.001)	-0.183 (0.021)*** (p<0.001/q<0.001)	-0.144 (0.019)*** (p<0.001/q<0.001)	-0.186 (0.024)*** (p<0.001/q<0.001)
24+	-0.193 (0.060)*** (p<0.001/q<0.001)	-0.174 (0.036)*** (p<0.001/q<0.001)	-0.020 (0.106) (0.850/0.850)	-0.095 (0.241) (0.693/0.693)	-0.174 (0.063)*** (0.006/0.006)	-0.256 (0.069)*** (p<0.001/q<0.001)	-0.246 (0.064)*** (p<0.001/q<0.001)

(Cont'd...)

Table S1. (Continued)

Variables	Guinea	Kenya	Lesotho	Liberia	Madagascar	Malawi	Mali
Place of residence (ref: urban)							
Rural	0.098 (0.026)*** (p<0.001/q<0.001)	0.043 (0.014)** (0.002/0.002)	0.166 (0.038)*** (p<0.001/q<0.001)	0.174 (0.023)*** (p<0.001/q<0.001)	0.064 (0.017)*** (p<0.001/q<0.001)	0.294 (0.018)*** (p<0.001/q<0.001)	0.166 (0.021)*** (p<0.001/q<0.001)
n	7,648	22,740	4,450	6,371	14,110	18,807	8,018
Model evaluation							
Poisson dispersion	0.6328192 (766.87)*** (p<0.001/q<0.001)	0.5333007 (3827.44)*** (p<0.001/q<0.001)	0.4741682 (1005.76)*** (p<0.001/q<0.001)	0.5990523 (743.31)*** (p<0.001/q<0.001)	0.6317359 (1311.56)*** (p<0.001/q<0.001)	0.4645824 (4589.85)*** (p<0.001/q<0.001)	0.6434144 (749.91)*** (p<0.001/q<0.001)
LRT statistic	27,906.70	78,220.69	14,091.25	23,114.91	49,771.84	64,794.10	29,966.77
AIC (Poisson)	27,141.83	74,395.25	13,087.49	22,373.60	48,462.28	60,206.25	29,218.86
AIC (COM-Poisson)	27,259.85	74,531.79	13,196.30	22,488.51	48,590.71	60,339.56	29,337.68
Pseudo-R <sup>2</sup>	0.195	0.237	0.217	0.225	0.203	0.258	0.217
Dispersion	1.724	2.067	2.394	1.81	1.71	2.401	1.685
<b>Variables</b>	<b>Mauritania</b>	<b>Mozambique</b>	<b>Namibia</b>	<b>Niger</b>	<b>Nigeria</b>	<b>Rwanda</b>	<b>Senegal</b>
Constant	1.389 (0.039)*** (p<0.001/q<0.001)	1.757 (0.044)*** (p<0.001/q<0.001)	1.986 (0.076)*** (p<0.001/q<0.001)	1.530 (0.041)*** (p<0.001/q<0.001)	1.531 (0.022)*** (p<0.001/q<0.001)	1.574 (0.077)*** (p<0.001/q<0.001)	1.593 (0.058)*** (p<0.001/q<0.001)
Premarital status (ref: marital)							
Premarital	0.031 (0.022) (0.150/0.159)	-0.133 (0.017)*** (p<0.001/q<0.001)	-0.139 (0.024)*** (p<0.001/q<0.001)	0.091 (0.031)** (0.004/0.004)	-0.124 (0.011)*** (p<0.001/q<0.001)	-0.403 (0.023)*** (p<0.001/q<0.001)	-0.205 (0.034)*** (p<0.001/q<0.001)
Maternal age (ref: <24)							
25-34	1.116 (0.028)*** (p<0.001/q<0.001)	1.306 (0.029)*** (p<0.001/q<0.001)	1.274 (0.043)*** (p<0.001/q<0.001)	1.382 (0.029)*** (p<0.001/q<0.001)	1.219 (0.017)*** (p<0.001/q<0.001)	1.319 (0.044)*** (p<0.001/q<0.001)	1.364 (0.042)*** (p<0.001/q<0.001)
35+	1.931 (0.036)*** (p<0.001/q<0.001)	2.109 (0.037)*** (p<0.001/q<0.001)	2.193 (0.053)*** (p<0.001/q<0.001)	2.280 (0.039)*** (p<0.001/q<0.001)	1.973 (0.021)*** (p<0.001/q<0.001)	2.562 (0.054)*** (p<0.001/q<0.001)	2.377 (0.056)*** (p<0.001/q<0.001)
Maternal education (ref: no education)							
Primary	-0.071 (0.014)*** (p<0.001/q<0.001)	-0.045 (0.018)* (0.011/0.012)	-0.184 (0.038)*** (p<0.001/q<0.001)	-0.151 (0.022)*** (p<0.001/q<0.001)	-0.133 (0.010)*** (p<0.001/q<0.001)	-0.154 (0.023)*** (p<0.001/q<0.001)	-0.193 (0.026)*** (p<0.001/q<0.001)
Secondary+	-0.247 (0.022)*** (p<0.001/q<0.001)	-0.421 (0.026)*** (p<0.001/q<0.001)	-0.645 (0.040)*** (p<0.001/q<0.001)	-0.338 (0.033)*** (p<0.001/q<0.001)	-0.334 (0.011)*** (p<0.001/q<0.001)	-0.411 (0.035)*** (p<0.001/q<0.001)	-0.431 (0.036)*** (p<0.001/q<0.001)
Wealth index (ref: poor)							
Middle	-0.171 (0.017)*** (p<0.001/q<0.001)	-0.091 (0.020)*** (p<0.001/q<0.001)	-0.175 (0.030)*** (p<0.001/q<0.001)	0.012 (0.017) (0.481/0.481)	-0.044 (0.010)*** (p<0.001/q<0.001)	-0.026 (0.023) (0.262/0.278)	-0.154 (0.026)*** (p<0.001/q<0.001)

(Contid...)

Table S1. (Continued)

Variables	Mauritania	Mozambique	Namibia	Niger	Nigeria	Rwanda	Senegal
Rich	-0.316 (0.020)*** ( $p < 0.001/q < 0.001$ )	-0.317 (0.023)*** ( $p < 0.001/q < 0.001$ )	-0.270 (0.031)*** ( $p < 0.001/q < 0.001$ )	-0.052 (0.017)*** (0.002/0.002)	-0.114 (0.011)*** ( $p < 0.001/q < 0.001$ )	-0.066 (0.022)** (0.002/0.003)	-0.299 (0.029)*** ( $p < 0.001/q < 0.001$ )
Age at birth (ref: <18)							
18-23	-0.312 (0.017)*** ( $p < 0.001/q < 0.001$ )	-0.357 (0.018)*** ( $p < 0.001/q < 0.001$ )	-0.298 (0.028)** ( $p < 0.001/q < 0.001$ )	-0.306 (0.016)*** ( $p < 0.001/q < 0.001$ )	-0.325 (0.009)*** ( $p < 0.001/q < 0.001$ )	-0.289 (0.034)*** ( $p < 0.001/q < 0.001$ )	-0.345 (0.027)*** ( $p < 0.001/q < 0.001$ )
24-29	-0.756 (0.027)*** ( $p < 0.001/q < 0.001$ )	-0.858 (0.035)*** ( $p < 0.001/q < 0.001$ )	-0.945 (0.047)*** ( $p < 0.001/q < 0.001$ )	-0.745 (0.034)*** ( $p < 0.001/q < 0.001$ )	-0.787 (0.016)*** ( $p < 0.001/q < 0.001$ )	-0.832 (0.045)*** ( $p < 0.001/q < 0.001$ )	-0.932 (0.052)*** ( $p < 0.001/q < 0.001$ )
30+	-1.325 (0.044)*** ( $p < 0.001/q < 0.001$ )	-1.537 (0.067)*** ( $p < 0.001/q < 0.001$ )	-1.692 (0.090)*** ( $p < 0.001/q < 0.001$ )	-1.301 (0.080)*** ( $p < 0.001/q < 0.001$ )	-1.416 (0.029)*** ( $p < 0.001/q < 0.001$ )	-1.692 (0.069)*** ( $p < 0.001/q < 0.001$ )	-1.849 (0.095)*** ( $p < 0.001/q < 0.001$ )
Contraceptive (ref: not using)							
Using	0.145 (0.020)*** ( $p < 0.001/q < 0.001$ )	0.093 (0.017)*** ( $p < 0.001/q < 0.001$ )	0.026 (0.022) (0.250/0.266)	0.102 (0.019)*** ( $p < 0.001/q < 0.001$ )	0.080 (0.011)*** ( $p < 0.001/q < 0.001$ )	0.068 (0.017)*** ( $p < 0.001/q < 0.001$ )	0.184 (0.021)*** ( $p < 0.001/q < 0.001$ )
Age at sexual debut (ref: <15)							
15-17	-0.043 (0.016)** (0.008/0.009)	-0.189 (0.017)*** ( $p < 0.001/q < 0.001$ )	-0.051 (0.044) (0.248/0.266)	-0.105 (0.015)*** ( $p < 0.001/q < 0.001$ )	-0.069 (0.009)*** ( $p < 0.001/q < 0.001$ )	0.165 (0.056)*** (0.003/0.004)	-0.042 (0.029) (0.145/0.147)
18-23	-0.140 (0.019)*** ( $p < 0.001/q < 0.001$ )	-0.236 (0.026)*** ( $p < 0.001/q < 0.001$ )	-0.092 (0.047) <sup>#</sup> (0.050/0.061)	-0.313 (0.023)*** ( $p < 0.001/q < 0.001$ )	-0.148 (0.012)*** ( $p < 0.001/q < 0.001$ )	-0.034 (0.057) (0.556/0.556)	-0.137 (0.035)*** ( $p < 0.001/q < 0.001$ )
24+	-0.187 (0.032)*** ( $p < 0.001/q < 0.001$ )	-0.094 (0.184) (0.609/0.609)	-0.074 (0.068) (0.272/0.272)	-0.443 (0.056)*** ( $p < 0.001/q < 0.001$ )	-0.146 (0.026)*** ( $p < 0.001/q < 0.001$ )	-0.137 (0.067)* (0.039/0.048)	-0.091 (0.063) (0.147/0.147)
Place of residence (ref: urban)							
Rural	0.013 (0.016) (0.435/0.435)	0.102 (0.020)*** ( $p < 0.001/q < 0.001$ )	0.215 (0.026)*** ( $p < 0.001/q < 0.001$ )	0.156 (0.019)*** ( $p < 0.001/q < 0.001$ )	-0.005 (0.009) (0.539/0.539)	0.041 (0.024) (0.085/0.096)	0.073 (0.025)** (0.004/0.004)
<i>n</i>	9,524	9,881	6,184	9,042	29,153	8,562	5,487
Model evaluation							
Poisson dispersion	0.7109605	0.5652773	0.5077883	0.6197373	0.6681252	0.5066113	0.5738246
LRT statistic	(566.18)*** ( $p < 0.001/q < 0.001$ )	(1,420.80)*** ( $p < 0.001/q < 0.001$ )	(1,191.17)*** ( $p < 0.001/q < 0.001$ )	(1,000.85)*** ( $p < 0.001/q < 0.001$ )	(2,326.45)*** ( $p < 0.001/q < 0.001$ )	(1,688.58)*** ( $p < 0.001/q < 0.001$ )	(771.53)*** ( $p < 0.001/q < 0.001$ )
AIC (Poisson)	35,986.51	34,513.63	20,217.97	35,045.70	1,10,914.89	29,443.66	19,698.86
AIC (COM-Poisson)	35,422.34	33,094.83	19,028.80	34,046.85	1,08,590.45	27,757.08	18,929.33
BIC (COM-Poisson)	35,544.09	33,217.20	19,143.20	34,167.71	1,08,731.21	27,877.02	19,041.70
Pseudo-R <sup>2</sup>	0.224	0.212	0.234	0.233	0.218	0.27	0.255
Dispersion	1.512	1.948	2.215	1.749	1.611	2.195	1.921

(Cont'd...)

Table S1. (Continued)

Variables	Sierra Leone	South Africa	Tanzania	Togo	Uganda	Zambia	Zimbabwe
Constant	1.462 (0.042)*** (p<0.001/q<0.001)	2.417 (0.108)*** (p<0.001/q<0.001)	1.365 (0.040)*** (p<0.001/q<0.001)	1.742 (0.067)*** (p<0.001/q<0.001)	1.538 (0.036)*** (p<0.001/q<0.001)	1.709 (0.048)*** (p<0.001/q<0.001)	2.357 (0.106)*** (p<0.001/q<0.001)
Premarital status (ref: marital)							
Premarital	-0.115 (0.014)*** (p<0.001/q<0.001)	-0.326 (0.032)*** (p<0.001/q<0.001)	-0.201 (0.015)*** (p<0.001/q<0.001)	-0.119 (0.025)*** (p<0.001/q<0.001)	-0.090 (0.013)*** (p<0.001/q<0.001)	-0.199 (0.016)*** (p<0.001/q<0.001)	-0.143 (0.027)*** (p<0.001/q<0.001)
Maternal age (ref: <24)							
25-34	1.112 (0.028)*** (p<0.001/q<0.001)	1.205 (0.051)*** (p<0.001/q<0.001)	1.144 (0.027)*** (p<0.001/q<0.001)	1.382 (0.041)*** (p<0.001/q<0.001)	1.269 (0.023)*** (p<0.001/q<0.001)	1.503 (0.031)*** (p<0.001/q<0.001)	1.623 (0.044)*** (p<0.001/q<0.001)
35+	1.911 (0.034)*** (p<0.001/q<0.001)	2.165 (0.060)*** (p<0.001/q<0.001)	1.937 (0.034)*** (p<0.001/q<0.001)	2.307 (0.052)*** (p<0.001/q<0.001)	2.113 (0.031)*** (p<0.001/q<0.001)	2.488 (0.041)*** (p<0.001/q<0.001)	2.549 (0.055)*** (p<0.001/q<0.001)
Maternal education (ref: no education)							
Primary	-0.042 (0.021)* (0.043/0.049)	-0.115 (0.073) (0.118/0.118)	-0.162 (0.016)*** (p<0.001/q<0.001)	-0.210 (0.020)*** (p<0.001/q<0.001)	-0.131 (0.014)*** (p<0.001/q<0.001)	-0.111 (0.022)*** (p<0.001/q<0.001)	-0.311 (0.076)*** (p<0.001/q<0.001)
Secondary+	-0.356 (0.021)*** (p<0.001/q<0.001)	-0.600 (0.070)*** (p<0.001/q<0.001)	-0.291 (0.024)*** (p<0.001/q<0.001)	-0.526 (0.030)*** (p<0.001/q<0.001)	-0.410 (0.021)*** (p<0.001/q<0.001)	-0.445 (0.027)*** (p<0.001/q<0.001)	-0.564 (0.077)*** (p<0.001/q<0.001)
Wealth index (ref: poor)							
Middle	-0.029 (0.017) <sup>#</sup> (0.093/0.093)	-0.107 (0.035)** (0.002/0.003)	-0.091 (0.017)*** (p<0.001/q<0.001)	-0.246 (0.024)*** (p<0.001/q<0.001)	-0.031 (0.014)* (0.029/0.029)	-0.075 (0.019)*** (p<0.001/q<0.001)	-0.158 (0.032)*** (p<0.001/q<0.001)
Rich	-0.223 (0.024)*** (p<0.001/q<0.001)	-0.301 (0.038)*** (p<0.001/q<0.001)	-0.265 (0.019)*** (p<0.001/q<0.001)	-0.469 (0.042)*** (p<0.001/q<0.001)	-0.166 (0.014)*** (p<0.001/q<0.001)	-0.293 (0.025)*** (p<0.001/q<0.001)	-0.439 (0.043)*** (p<0.001/q<0.001)
Age at birth (ref: <18)							
18-23	-0.322 (0.016)*** (p<0.001/q<0.001)	-0.376 (0.035)*** (p<0.001/q<0.001)	-0.284 (0.016)*** (p<0.001/q<0.001)	-0.291 (0.023)*** (p<0.001/q<0.001)	-0.262 (0.013)*** (p<0.001/q<0.001)	-0.326 (0.017)*** (p<0.001/q<0.001)	-0.322 (0.032)*** (p<0.001/q<0.001)
24-29	-0.794 (0.028)*** (p<0.001/q<0.001)	-1.060 (0.054)*** (p<0.001/q<0.001)	-0.845 (0.031)*** (p<0.001/q<0.001)	-0.897 (0.040)*** (p<0.001/q<0.001)	-0.770 (0.030)*** (p<0.001/q<0.001)	-0.971 (0.040)*** (p<0.001/q<0.001)	-0.983 (0.066)*** (p<0.001/q<0.001)
30+	-1.366 (0.061)*** (p<0.001/q<0.001)	-1.776 (0.099)*** (p<0.001/q<0.001)	-1.553 (0.064)*** (p<0.001/q<0.001)	-1.485 (0.077)*** (p<0.001/q<0.001)	-1.646 (0.087)*** (p<0.001/q<0.001)	-1.907 (0.095)*** (p<0.001/q<0.001)	-1.988 (0.135)*** (p<0.001/q<0.001)
Contraceptive (ref: not using)							
Using	0.064 (0.016)*** (p<0.001/q<0.001)	0.153 (0.027)*** (p<0.001/q<0.001)	-0.026 (0.014)* (0.059/0.067)	0.156 (0.023)*** (p<0.001/q<0.001)	0.068 (0.012)*** (p<0.001/q<0.001)	0.151 (0.015)*** (p<0.001/q<0.001)	0.207 (0.023)*** (p<0.001/q<0.001)
Age at sexual debut (ref: <15)							
15-17	-0.061 (0.015)*** (p<0.001/q<0.001)	-0.083 (0.051) (0.104/0.118)	0.008 (0.018) (0.652/0.692)	-0.018 (0.027) (0.502/0.510)	-0.066 (0.014)*** (p<0.001/q<0.001)	-0.074 (0.018)*** (p<0.001/q<0.001)	-0.023 (0.044) (0.607/0.607)
18-23	-0.124 (0.022)*** (p<0.001/q<0.001)	-0.125 (0.055)* (0.022/0.026)	-0.000 (0.023) (0.998/0.998)	-0.100 (0.032)** (0.002/0.002)	-0.187 (0.018)*** (p<0.001/q<0.001)	-0.152 (0.024)*** (p<0.001/q<0.001)	-0.298 (0.051)*** (p<0.001/q<0.001)

(Contd...)

Table S1. (Continued)

Variables	Sierra Leone	South Africa	Tanzania	Togo	Uganda	Zambia	Zimbabwe
24+	-0.201 (0.114) <sup>#</sup> (0.078/0.083)	-0.164 (0.104) (0.117/0.118)	0.176 (0.053) <sup>***</sup> ( <i>p</i> <0.001/ <i>q</i> <0.001)	0.041 (0.062) (0.510/0.510)	-0.212 (0.059) <sup>***</sup> ( <i>p</i> <0.001/ <i>q</i> <0.001)	-0.275 (0.081) <sup>***</sup> ( <i>p</i> <0.001/ <i>q</i> <0.001)	-0.300 (0.094) <sup>***</sup> ( <i>p</i> <0.001/ <i>q</i> <0.001)
Place of residence (ref: urban)							
Rural	0.108 (0.022) <sup>***</sup> ( <i>p</i> <0.001/ <i>q</i> <0.001)	0.136 (0.031) <sup>***</sup> ( <i>p</i> <0.001/ <i>q</i> <0.001)	0.190 (0.018) <sup>***</sup> ( <i>p</i> <0.001/ <i>q</i> <0.001)	0.063 (0.040) (0.111/0.126)	0.191 (0.016) <sup>***</sup> ( <i>p</i> <0.001/ <i>q</i> <0.001)	0.166 (0.021) <sup>***</sup> ( <i>p</i> <0.001/ <i>q</i> <0.001)	0.116 (0.041) <sup>**</sup> (0.005/0.005)
<i>n</i>	11,367	5,942	10,932	6,736	13,585	10,179	6,972
Model evaluation							
Poisson dispersion	0.6066708	0.4241268	0.6429055	0.5529377	0.6252196	0.5358088	0.4291933
LRT statistic	(1,297.81) <sup>***</sup> ( <i>p</i> <0.001/ <i>q</i> <0.001)	(1,785.94) <sup>***</sup> ( <i>p</i> <0.001/ <i>q</i> <0.001)	(976.87) <sup>***</sup> ( <i>p</i> <0.001/ <i>q</i> <0.001)	(1,047.75) <sup>***</sup> ( <i>p</i> <0.001/ <i>q</i> <0.001)	(1,401.45) <sup>***</sup> ( <i>p</i> <0.001/ <i>q</i> <0.001)	(1,689.66) <sup>***</sup> ( <i>p</i> <0.001/ <i>q</i> <0.001)	(2,025.29) <sup>***</sup> ( <i>p</i> <0.001/ <i>q</i> <0.001)
AIC (Poisson)	40,586.55	18,091.22	39,666.65	24,127.07	50,738.29	35,923.90	22,593.95
AIC (COM-Poisson)	39,290.74	16,307.28	38,691.78	23,081.31	49,338.84	34,236.23	20,570.65
BIC (COM-Poisson)	39,415.49	16,421	38,815.87	23,197.17	49,466.62	34,359.11	20,687.10
Pseudo-R <sup>2</sup>	0.196	0.191	0.202	0.247	0.231	0.255	0.239
Dispersion	1.801	2.755	1.678	1.989	1.732	2.049	2.652

Notes: Significance level: \*\*\*FDR-adjusted *p* < 0.001, \*\*FDRadjusted *p* < 0.01, \*FDRadjusted *p* < 0.05, # FDRadjusted *p* < 0.1; *q* = FDR *p*.  
Abbreviations: AIC: Akaike information criterion; BIC: Bayesian information criterion; COM-Poisson: Conway-Maxwell-Poisson; FDR: False discovery rate; LRT: Likelihood ratio test;  
PseudoR<sup>2</sup>: Pseudo coefficient of determination; *q* = FDR *p*; *q*-value (FDR-adjusted *p*-value); Ref: reference.

Table S2. COM-Poisson regression estimates with interaction between premarital childbearing and maternal age

Variables	Angola	Benin	Burkina Faso	Burundi	Cameroon	Chad	Comoros
Constant	1.596 (0.039)*** (p<0.001/q<0.001)	1.830 (0.041)*** (p<0.001/q<0.001)	1.855 (0.045)*** (p<0.001/q<0.001)	1.487 (0.052)*** (p<0.001/q<0.001)	1.363 (0.042)*** (p<0.001/q<0.001)	1.466 (0.030)*** (p<0.001/q<0.001)	1.481 (0.073)*** (p<0.001/q<0.001)
Premarital status (ref: marital)							
Premarital	-0.146 (0.030)*** (p<0.001/q<0.001)	-0.030 (0.054) (0.570/0.602)	0.007 (0.058) (0.909/0.923)	-0.263 (0.059)*** (p<0.001/q<0.001)	-0.037 (0.038) (0.336/0.336)	0.147 (0.050)** (0.003/0.004)	0.317 (0.120)** (0.008/0.012)
Maternal age (ref: <24)							
25-34	1.233 (0.031)*** (p<0.001/q<0.001)	1.459 (0.032)*** (p<0.001/q<0.001)	1.544 (0.033)*** (p<0.001/q<0.001)	1.418 (0.034)*** (p<0.001/q<0.001)	1.152 (0.032)*** (p<0.001/q<0.001)	1.281 (0.023)*** (p<0.001/q<0.001)	0.965 (0.051)*** (p<0.001/q<0.001)
35+	2.005 (0.037)*** (p<0.001/q<0.001)	2.401 (0.040)*** (p<0.001/q<0.001)	2.642 (0.042)*** (p<0.001/q<0.001)	2.472 (0.044)*** (p<0.001/q<0.001)	1.828 (0.038)*** (p<0.001/q<0.001)	2.063 (0.030)*** (p<0.001/q<0.001)	1.631 (0.061)*** (p<0.001/q<0.001)
Maternal education (ref: no education)							
Primary	0.052 (0.015)*** (p<0.001/q<0.001)	-0.176 (0.019)*** (p<0.001/q<0.001)	-0.227 (0.022)*** (p<0.001/q<0.001)	-0.132 (0.015)*** (p<0.001/q<0.001)	-0.056 (0.018)** (0.002/0.002)	0.007 (0.013) (0.621/0.656)	-0.184 (0.030)*** (p<0.001/q<0.001)
Secondary+	-0.273 (0.021)*** (p<0.001/q<0.001)	-0.440 (0.025)*** (p<0.001/q<0.001)	-0.614 (0.027)*** (p<0.001/q<0.001)	-0.434 (0.029)*** (p<0.001/q<0.001)	-0.265 (0.021)*** (p<0.001/q<0.001)	-0.320 (0.023)*** (p<0.001/q<0.001)	-0.333 (0.034)*** (p<0.001/q<0.001)
Wealth index (ref: poor)							
Middle	-0.075 (0.019)*** (p<0.001/q<0.001)	-0.127 (0.018)*** (p<0.001/q<0.001)	-0.069 (0.018)*** (p<0.001/q<0.001)	0.107 (0.018)*** (p<0.001/q<0.001)	-0.056 (0.019)** (0.003/0.003)	0.036 (0.013)** (0.006/0.008)	-0.160 (0.031)*** (p<0.001/q<0.001)
Rich	-0.168 (0.022)*** (p<0.001/q<0.001)	-0.302 (0.017)*** (p<0.001/q<0.001)	-0.204 (0.019)*** (p<0.001/q<0.001)	0.138 (0.016)*** (p<0.001/q<0.001)	-0.172 (0.023)*** (p<0.001/q<0.001)	0.012 (0.012) (0.311/0.348)	-0.246 (0.030)*** (p<0.001/q<0.001)
Age at birth (ref: <18)							
18-23	-0.332 (0.015)*** (p<0.001/q<0.001)	-0.346 (0.018)*** (p<0.001/q<0.001)	-0.376 (0.017)*** (p<0.001/q<0.001)	-0.272 (0.022)*** (p<0.001/q<0.001)	-0.298 (0.017)*** (p<0.001/q<0.001)	-0.293 (0.013)*** (p<0.001/q<0.001)	-0.280 (0.032)*** (p<0.001/q<0.001)
24-29	-0.921 (0.030)*** (p<0.001/q<0.001)	-0.873 (0.029)*** (p<0.001/q<0.001)	-0.955 (0.030)*** (p<0.001/q<0.001)	-0.744 (0.035)*** (p<0.001/q<0.001)	-0.804 (0.030)*** (p<0.001/q<0.001)	-0.683 (0.026)*** (p<0.001/q<0.001)	-0.701 (0.054)*** (p<0.001/q<0.001)
30+	-1.689 (0.058)*** (p<0.001/q<0.001)	-1.606 (0.064)*** (p<0.001/q<0.001)	-1.778 (0.066)*** (p<0.001/q<0.001)	-1.671 (0.063)*** (p<0.001/q<0.001)	-1.428 (0.066)*** (p<0.001/q<0.001)	-1.150 (0.060)*** (p<0.001/q<0.001)	-1.304 (0.085)*** (p<0.001/q<0.001)
Contraceptive (ref: not using)							
Using	-0.031 (0.025) (0.216/0.256)	0.132 (0.019)*** (p<0.001/q<0.001)	0.075 (0.014)*** (p<0.001/q<0.001)	-0.005 (0.016) (0.775/0.775)	0.092 (0.018)*** (p<0.001/q<0.001)	0.098 (0.024)*** (p<0.001/q<0.001)	0.089 (0.033)* (0.007/0.011)
Age at sexual debut (ref: <15)							
15-17	-0.000 (0.015) (0.994/0.994)	-0.112 (0.019)*** (p<0.001/q<0.001)	-0.050 (0.021)* (0.019/0.024)	-0.044 (0.034) (0.190/0.213)	-0.116 (0.017)*** (p<0.001/q<0.001)	-0.081 (0.011)*** (p<0.001/q<0.001)	-0.026 (0.035) (0.458/0.458)
18-23	-0.033 (0.020) (0.098/0.124)	-0.204 (0.024)*** (p<0.001/q<0.001)	-0.141 (0.025)*** (p<0.001/q<0.001)	-0.163 (0.036)*** (p<0.001/q<0.001)	-0.169 (0.022)*** (p<0.001/q<0.001)	-0.182 (0.017)*** (p<0.001/q<0.001)	-0.059 (0.042) (0.159/0.177)

(Cont'd...)

Table S2. (Continued)

Variables	Angola	Benin	Burkina Faso	Burundi	Cameroon	Chad	Comoros
24+	-0.106 (0.045)* (0.0178/0.024)	-0.244 (0.071)** (p<0.001/q<0.001)	-0.158 (0.086) * (0.067/0.079)	-0.254 (0.049)** (p<0.001/q<0.001)	-0.287 (0.082)** (p<0.001/q<0.001)	-0.151 (0.039)** (p<0.001/q<0.001)	-0.088 (0.061) (0.149/0.177)
Place of residence (ref: urban)							
Rural	0.048 (0.017)** (0.006/0.008)	0.100 (0.015)** (p<0.001/q<0.001)	0.246 (0.019)** (p<0.001/q<0.001)	0.159 (0.021)** (p<0.001/q<0.001)	0.151 (0.018)** (p<0.001/q<0.001)	0.033 (0.013)* (0.014/0.016)	0.053 (0.025)* (0.038/0.049)
Premarital maternal age (ref: marital: <24)							
Premarital:25-34	0.016 (0.037) (0.664/0.742)	0.010 (0.061) (0.871/0.871)	0.006 (0.065) (0.923/0.923)	-0.148 (0.071)* (0.0354/0.042)	-0.158 (0.044)** (p<0.001/q<0.001)	0.010 (0.058) (0.866/0.866)	-0.176 (0.135) (0.194/0.204)
Premarital:35+	-0.003 (0.036) (0.924/0.975)	-0.070 (0.058) (0.231/0.259)	-0.065 (0.062) (0.299/0.335)	0.029 (0.067) (0.669/0.706)	-0.195 (0.043)** (p<0.001/q<0.001)	-0.169 (0.056)** (0.003/0.004)	-0.263 (0.127)* (0.038/0.049)
n	11,004	11,569	12,779	10,501	9,218	13,925	2,750
Model evaluation							
Poisson dispersion	0.6308929	0.5435659	0.4748371	0.5633633	0.6953239	0.6642438	0.7233858
LRT statistic	(1,114.91)** (p<0.001/q<0.001)	(1,920.81)** (p<0.001/q<0.001)	(3,011.35)** (p<0.001/q<0.001)	(1,567.18)** (p<0.001/q<0.001)	(594.76)** (p<0.001/q<0.001)	(1,186.07)** (p<0.001/q<0.001)	(154.28)** (p<0.001/q<0.001)
AIC (Poisson)	40,116.46	41,695.86	44,872.49	38,597.95	33,811.57	54,784.14	10,423.45
AIC (COM-Poisson)	39,003.55	39,777.05	41,863.14	37,032.77	33,218.81	53,600.07	10,271.18
BIC (COM-Poisson)	39,142.36	39,916.82	42,004.79	37,170.69	33,354.26	53,743.35	10,383.64
Pseudo-R <sup>2</sup>	0.201	0.224	0.24	0.221	0.183	0.201	0.175
Dispersion	1.7317	2.0276	2.3484	1.9442	1.5496	1.6259	1.494
Variables	Congo	Congo DRC	Côte d'Ivoire	Ethiopia	Gabon	Gambia	Ghana
Constant	1.514 (0.050)** (p<0.001/q<0.001)	1.162 (0.031)** (p<0.001/q<0.001)	1.662 (0.043)** (p<0.001/q<0.001)	1.126 (0.040)** (p<0.001/q<0.001)	1.248 (0.059)** (p<0.001/q<0.001)	1.484 (0.049)** (p<0.001/q<0.001)	1.702 (0.053)** (p<0.001/q<0.001)
Premarital status (ref: marital)							
Premarital	-0.156 (0.042)** (p<0.001/q<0.001)	-0.223 (0.038)** (p<0.001/q<0.001)	-0.088 (0.042)* (0.035/0.037)	0.022 (0.100) (0.826/0.826)	-0.129 (0.049)* (0.008/0.010)	-0.037 (0.070) (0.596/0.596) #	-0.103 (0.056) (0.063/0.075) #
Maternal age (ref: <24)							
25-34	1.198 (0.035)** (p<0.001/q<0.001)	1.205 (0.023)** (p<0.001/q<0.001)	1.256 (0.035)** (p<0.001/q<0.001)	1.143 (0.029)** (p<0.001/q<0.001)	0.874 (0.048)** (p<0.001/q<0.001)	1.435 (0.039)** (p<0.001/q<0.001)	1.381 (0.042)** (p<0.001/q<0.001)
35+	1.989 (0.042)** (p<0.001/q<0.001)	1.954 (0.029)** (p<0.001/q<0.001)	2.111 (0.041)** (p<0.001/q<0.001)	1.889 (0.036)** (p<0.001/q<0.001)	1.468 (0.051)** (p<0.001/q<0.001)	2.346 (0.049)** (p<0.001/q<0.001)	2.403 (0.049)** (p<0.001/q<0.001)
Maternal education (ref: no education)							
Primary	-0.080 (0.025)** (0.001/0.002)	0.012 (0.013) (0.366/0.419)	-0.189 (0.018)** (p<0.001/q<0.001)	-0.278 (0.017)** (p<0.001/q<0.001)	0.060 (0.032) (0.060/0.067) #	-0.119 (0.022)** (p<0.001/q<0.001)	-0.190 (0.022)** (p<0.001/q<0.001)

(Cont'd...)

Table S2. (Continued)

Variables	Congo	Congo DRC	Côte d'Ivoire	Ethiopia	Gabon	Gambia	Ghana
Secondary+	-0.261 (0.025)*** (p<0.001/q<0.001)	-0.170 (0.015)*** (p<0.001/q<0.001)	-0.435 (0.025)*** (p<0.001/q<0.001)	-0.539 (0.029)*** (p<0.001/q<0.001)	-0.153 (0.031)*** (p<0.001/q<0.001)	-0.316 (0.023)*** (p<0.001/q<0.001)	-0.396 (0.021)*** (p<0.001/q<0.001)
Wealth index (ref: poor)							
Middle	-0.171 (0.027)*** (p<0.001/q<0.001)	0.069 (0.013)*** (p<0.001/q<0.001)	-0.154 (0.018)*** (p<0.001/q<0.001)	-0.100 (0.019)*** (p<0.001/q<0.001)	-0.150 (0.024)*** (p<0.001/q<0.001)	-0.098 (0.023)*** (p<0.001/q<0.001)	-0.174 (0.023)*** (p<0.001/q<0.001)
Rich	-0.312 (0.027)*** (p<0.001/q<0.001)	0.037 (0.015)* (0.012/0.018)	-0.383 (0.022)*** (p<0.001/q<0.001)	-0.117 (0.017)*** (p<0.001/q<0.001)	-0.191 (0.022)*** (p<0.001/q<0.001)	-0.221 (0.025)*** (p<0.001/q<0.001)	-0.331 (0.024)*** (p<0.001/q<0.001)
Age at birth (ref: <18)							
18-23	-0.259 (0.017)*** (p<0.001/q<0.001)	-0.303 (0.013)*** (p<0.001/q<0.001)	-0.312 (0.016)*** (p<0.001/q<0.001)	-0.302 (0.016)*** (p<0.001/q<0.001)	-0.263 (0.018)*** (p<0.001/q<0.001)	-0.258 (0.020)*** (p<0.001/q<0.001)	-0.308 (0.021)*** (p<0.001/q<0.001)
24-29	-0.837 (0.036)*** (p<0.001/q<0.001)	-0.846 (0.025)*** (p<0.001/q<0.001)	-0.899 (0.030)*** (p<0.001/q<0.001)	-0.797 (0.034)*** (p<0.001/q<0.001)	-0.782 (0.035)*** (p<0.001/q<0.001)	-0.878 (0.042)*** (p<0.001/q<0.001)	-0.865 (0.031)*** (p<0.001/q<0.001)
30+	-1.397 (0.085)*** (p<0.001/q<0.001)	-1.457 (0.050)*** (p<0.001/q<0.001)	-1.653 (0.059)*** (p<0.001/q<0.001)	-1.283 (0.070)*** (p<0.001/q<0.001)	-1.322 (0.060)*** (p<0.001/q<0.001)	-1.412 (0.093)*** (p<0.001/q<0.001)	-1.621 (0.061)*** (p<0.001/q<0.001)
Contraceptive (ref: not using)							
Using	0.045 (0.021)* (0.030/0.036)	0.062 (0.020)** (0.002/0.003)	0.131 (0.018)*** (p<0.001/q<0.001)	-0.088 (0.015)*** (p<0.001/q<0.001)	0.058 (0.022)* (0.008/0.010)	0.230 (0.019)*** (p<0.001/q<0.001)	0.167 (0.017)*** (p<0.001/q<0.001)
Age at sexual debut (ref: <15)							
15-17	-0.107 (0.017)*** (p<0.001/q<0.001)	0.011 (0.012) (0.375/0.419)	-0.138 (0.016)*** (p<0.001/q<0.001)	-0.009 (0.016) (0.549/0.596)	-0.079 (0.018)*** (p<0.001/q<0.001)	-0.085 (0.023)*** (p<0.001/q<0.001)	-0.062 (0.024)* (0.011/0.014)
18-23	-0.136 (0.026)*** (p<0.001/q<0.001)	-0.037 (0.016)* (0.021/0.028)	-0.228 (0.023)*** (p<0.001/q<0.001)	-0.071 (0.021)*** (p<0.001/q<0.001)	-0.150 (0.027)*** (p<0.001/q<0.001)	-0.222 (0.029)*** (p<0.001/q<0.001)	-0.115 (0.027)*** (p<0.001/q<0.001)
24+	0.001 (0.112) (0.991/0.991)	0.059 (0.040) (0.138/0.175)	-0.354 (0.111)** (0.001/0.002)	-0.028 (0.049) (0.564/0.596)	-0.199 (0.103)* (0.054/0.065)	-0.303 (0.060)*** (p<0.001/q<0.001)	-0.075 (0.060) (0.210/0.235)
Place of residence (ref: urban)							
Rural	0.134 (0.023)*** (p<0.001/q<0.001)	0.103 (0.014)*** (p<0.001/q<0.001)	0.071 (0.017)*** (p<0.001/q<0.001)	0.392 (0.021)*** (p<0.001/q<0.001)	0.098 (0.018)*** (p<0.001/q<0.001)	0.146 (0.021)*** (p<0.001/q<0.001)	0.100 (0.018)*** (p<0.001/q<0.001)
Premarital maternal age (ref: marital: <24)							
Premarital:25-34	0.077 (0.050) (0.124/0.139)	0.015 (0.046) (0.744/0.744)	-0.053 (0.047) (0.262/0.262)	0.087 (0.107) (0.414/0.491)	0.026 (0.056) (0.639/0.639)	-0.130 (0.079) (0.101/0.113)	-0.021 (0.063) (0.743/0.743)
Premarital:35+	0.049 (0.047) (0.305/0.322)	-0.021 (0.044) (0.631/0.666)	-0.100 (0.045)* (0.026/0.030)	-0.100 (0.104) (0.334/0.423)	-0.038 (0.053) (0.481/0.508)	-0.076 (0.076) (0.316/0.334)	-0.061 (0.060) (0.309/0.326)
n	8,702	13,904	10,809	10,054	6,823	7,639	10,046
Model evaluation							
Poisson dispersion	0.6141998	0.7060441	0.5934813	0.6672035	0.7572105	0.5824771	0.5263816

(Cont'd...)

Table S2. (Continued)

Variables	Congo	Congo DRC	Côte d'Ivoire	Ethiopia	Gabon	Gambia	Ghana
LRT statistic	(959.53)*** ( $p < 0.001/q < 0.001$ )	(844.43)*** ( $p < 0.001/q < 0.001$ )	(1,337.21)*** ( $p < 0.001/q < 0.001$ )	(776.36)*** ( $p < 0.001/q < 0.001$ )	(263.85)*** ( $p < 0.001/q < 0.001$ )	(1,033.36)*** ( $p < 0.001/q < 0.001$ )	(1,826.22)*** ( $p < 0.001/q < 0.001$ )
AIC (Poisson)	31,358.43	52,952.24	38,732.15	37,584.14	24,995.99	27,985.90	34,653.29
AIC (COM-Poisson)	30,400.91	52,109.81	37,396.94	36,809.78	24,734.14	26,954.54	32,829.07
BIC (COM-Poisson)	30,535.26	52,253.07	37,535.42	36,946.88	24,863.87	27,086.42	32,966.15
Pseudo-R <sup>2</sup>	0.194	0.194	0.208	0.202	0.15	0.222	0.214
Dispersion	1.7789	1.5188	1.844	1.6088	1.4067	1.8851	2.1239
Variables	Guinea	Kenya	Lesotho	Liberia	Madagascar	Malawi	Mali
Constant	1.315 (0.049)*** ( $p < 0.001/q < 0.001$ )	2.309 (0.038)*** ( $p < 0.001/q < 0.001$ )	1.726 (0.125)*** ( $p < 0.001/q < 0.001$ )	1.449 (0.057)*** ( $p < 0.001/q < 0.001$ )	1.522 (0.036)*** ( $p < 0.001/q < 0.001$ )	1.780 (0.038)*** ( $p < 0.001/q < 0.001$ )	1.400 (0.043)*** ( $p < 0.001/q < 0.001$ )
Premarital status (ref: marital)							
Premarital	-0.136 (0.059)* (0.020/0.024)	-0.069 (0.033)* (0.035/0.035)	-0.067 (0.078) (0.387/0.432)	-0.168 (0.050)*** ( $p < 0.001/q < 0.001$ )	-0.122 (0.035)*** ( $p < 0.001/q < 0.001$ )	-0.074 (0.038) (0.048/0.054) #	-0.069 (0.054) (0.197/0.220)
Maternal age (ref: <24)							
25-34	1.210 (0.035)*** ( $p < 0.001/q < 0.001$ )	1.310 (0.027)*** ( $p < 0.001/q < 0.001$ )	1.310 (0.060)*** ( $p < 0.001/q < 0.001$ )	1.308 (0.049)*** ( $p < 0.001/q < 0.001$ )	1.130 (0.025)*** ( $p < 0.001/q < 0.001$ )	1.671 (0.027)*** ( $p < 0.001/q < 0.001$ )	1.306 (0.032)*** ( $p < 0.001/q < 0.001$ )
35+	1.974 (0.043)*** ( $p < 0.001/q < 0.001$ )	2.146 (0.031)*** ( $p < 0.001/q < 0.001$ )	2.371 (0.072)*** ( $p < 0.001/q < 0.001$ )	2.119 (0.056)*** ( $p < 0.001/q < 0.001$ )	1.965 (0.031)*** ( $p < 0.001/q < 0.001$ )	2.769 (0.035)*** ( $p < 0.001/q < 0.001$ )	2.106 (0.041)*** ( $p < 0.001/q < 0.001$ )
Maternal education (ref: no education)							
Primary	-0.099 (0.029)*** ( $p < 0.001/q < 0.001$ )	-0.558 (0.015)*** ( $p < 0.001/q < 0.001$ )	-0.082 (0.093) (0.379/0.432)	-0.076 (0.021)*** ( $p < 0.001/q < 0.001$ )	-0.127 (0.015)*** ( $p < 0.001/q < 0.001$ )	-0.199 (0.016)*** ( $p < 0.001/q < 0.001$ )	-0.072 (0.023)** (0.002/0.002)
Secondary+	-0.269 (0.031)*** ( $p < 0.001/q < 0.001$ )	-0.888 (0.019)*** ( $p < 0.001/q < 0.001$ )	-0.411 (0.097)*** ( $p < 0.001/q < 0.001$ )	-0.360 (0.026)*** ( $p < 0.001/q < 0.001$ )	-0.338 (0.020)*** ( $p < 0.001/q < 0.001$ )	-0.686 (0.023)*** ( $p < 0.001/q < 0.001$ )	-0.258 (0.027)*** ( $p < 0.001/q < 0.001$ )
Wealth index (ref: poor)							
Middle	-0.038 (0.020) # (0.0613/0.069)	-0.229 (0.014)*** ( $p < 0.001/q < 0.001$ )	-0.197 (0.038)*** ( $p < 0.001/q < 0.001$ )	-0.098 (0.023)*** ( $p < 0.001/q < 0.001$ )	-0.139 (0.016)*** ( $p < 0.001/q < 0.001$ )	-0.034 (0.016)* (0.032/0.038)	-0.055 (0.019)** (0.003/0.004)
Rich	-0.095 (0.026)*** ( $p < 0.001/q < 0.001$ )	-0.466 (0.017)*** ( $p < 0.001/q < 0.001$ )	-0.421 (0.040)*** ( $p < 0.001/q < 0.001$ )	-0.261 (0.029)*** ( $p < 0.001/q < 0.001$ )	-0.364 (0.017)*** ( $p < 0.001/q < 0.001$ )	-0.112 (0.015)*** ( $p < 0.001/q < 0.001$ )	-0.188 (0.020)*** ( $p < 0.001/q < 0.001$ )
Age at birth (ref: <18)							
18-23	-0.293 (0.019)*** ( $p < 0.001/q < 0.001$ )	-0.326 (0.013)*** ( $p < 0.001/q < 0.001$ )	-0.366 (0.040)*** ( $p < 0.001/q < 0.001$ )	-0.281 (0.020)*** ( $p < 0.001/q < 0.001$ )	-0.274 (0.015)*** ( $p < 0.001/q < 0.001$ )	-0.329 (0.014)*** ( $p < 0.001/q < 0.001$ )	-0.319 (0.017)*** ( $p < 0.001/q < 0.001$ )
24-29	-0.797 (0.033)*** ( $p < 0.001/q < 0.001$ )	-0.815 (0.023)*** ( $p < 0.001/q < 0.001$ )	-1.053 (0.068)*** ( $p < 0.001/q < 0.001$ )	-0.831 (0.043)*** ( $p < 0.001/q < 0.001$ )	-0.748 (0.028)*** ( $p < 0.001/q < 0.001$ )	-0.100 (0.034)*** ( $p < 0.001/q < 0.001$ )	-0.798 (0.034)*** ( $p < 0.001/q < 0.001$ )
30+	-1.644 (0.065)*** ( $p < 0.001/q < 0.001$ )	-1.466 (0.050)*** ( $p < 0.001/q < 0.001$ )	-1.783 (0.125)*** ( $p < 0.001/q < 0.001$ )	-1.495 (0.092)*** ( $p < 0.001/q < 0.001$ )	-1.386 (0.057)*** ( $p < 0.001/q < 0.001$ )	-1.925 (0.082)*** ( $p < 0.001/q < 0.001$ )	-1.473 (0.063)*** ( $p < 0.001/q < 0.001$ )

(Cont'd...)

Table S2. (Continued)

Variables	Guinea	Kenya	Lesotho	Liberia	Madagascar	Malawi	Mali
Contraceptive (ref: not using)							
Using	0.089 (0.025)*** ( $p < 0.001/q < 0.001$ )	0.048 (0.011)*** ( $p < 0.001/q < 0.001$ )	0.052 (0.028) <sup>#</sup> (0.0635/0.100)	0.095 (0.018)*** ( $p < 0.001/q < 0.001$ )	-0.022 (0.012) <sup>#</sup> (0.071/0.080)	0.157 (0.012)*** ( $p < 0.001/q < 0.001$ )	0.103 (0.019)*** ( $p < 0.001/q < 0.001$ )
Age at sexual debut (ref: <15)							
15-17	-0.066 (0.018)*** ( $p < 0.001/q < 0.001$ )	-0.076 (0.014)*** ( $p < 0.001/q < 0.001$ )	0.032 (0.054) (0.546/0.576)	-0.093 (0.020)*** ( $p < 0.001/q < 0.001$ )	-0.121 (0.016)*** ( $p < 0.001/q < 0.001$ )	-0.089 (0.015)*** ( $p < 0.001/q < 0.001$ )	-0.069 (0.018)*** ( $p < 0.001/q < 0.001$ )
18-23	-0.140 (0.025)*** ( $p < 0.001/q < 0.001$ )	-0.182 (0.017)*** ( $p < 0.001/q < 0.001$ )	-0.053 (0.059) (0.364/0.432)	-0.210 (0.032)*** ( $p < 0.001/q < 0.001$ )	-0.183 (0.021)*** ( $p < 0.001/q < 0.001$ )	-0.143 (0.019)*** ( $p < 0.001/q < 0.001$ )	-0.186 (0.024)*** ( $p < 0.001/q < 0.001$ )
24+	-0.192 (0.060)*** (0.001/0.002)	-0.174 (0.036)*** ( $p < 0.001/q < 0.001$ )	-0.022 (0.107) (0.834/0.834)	-0.096 (0.241) (0.691/0.730)	-0.175 (0.063)** (0.005/0.007)	-0.252 (0.070)*** ( $p < 0.001/q < 0.001$ )	-0.247 (0.064)*** ( $p < 0.001/q < 0.001$ )
Place of residence (ref: urban)							
Rural	0.098 (0.026)*** ( $p < 0.001/q < 0.001$ )	0.042 (0.014)** (0.002/0.002)	0.165 (0.038)*** ( $p < 0.001/q < 0.001$ )	0.175 (0.023)*** ( $p < 0.001/q < 0.001$ )	0.064 (0.017)*** ( $p < 0.001/q < 0.001$ )	0.295 (0.018)*** ( $p < 0.001/q < 0.001$ )	0.166 (0.021)*** ( $p < 0.001/q < 0.001$ )
Premarital maternal age (ref: marital: <24)							
Premarital:25-34	0.013 (0.069) (0.853/0.853)	-0.124 (0.038)** (0.001/0.001)	-0.140 (0.095) (0.139/0.189)	0.005 (0.059) (0.937/0.937)	0.000 (0.042) (0.992/0.992)	0.066 (0.045) (0.141/0.148)	-0.036 (0.062) (0.558/0.589)
Premarital:35+	0.033 (0.066) (0.611/0.645)	-0.187 (0.036)*** ( $p < 0.001/q < 0.001$ )	-0.154 (0.095) (0.106/0.154)	0.050 (0.055) (0.358/0.400)	0.012 (0.040) (0.764/0.806)	-0.050 (0.043) (0.248/0.248)	-0.022 (0.060) (0.712/0.712)
<i>n</i>	7,648	22,740	4,450	6,371	14,110	18,807	8,018
Model evaluation							
Poisson dispersion	0.6329288	0.5328971	0.4741532	0.5989853	0.6318065	0.4643276	0.6435558
LRT statistic	(766.80)*** ( $p < 0.001/q < 0.001$ )	(3,845.61)*** ( $p < 0.001/q < 0.001$ )	(1,007.61)*** ( $p < 0.001/q < 0.001$ )	(743.59)*** ( $p < 0.001/q < 0.001$ )	(1,311.47)*** ( $p < 0.001/q < 0.001$ )	(4,596.97)*** ( $p < 0.001/q < 0.001$ )	(750.12)*** ( $p < 0.001/q < 0.001$ )
AIC (Poisson)	27,910.27	78,214.46	14,094.23	23,117.29	49,775.57	64,792.39	29,970.63
AIC (COM-Poisson)	27,145.47	74,370.85	13,088.63	22,375.70	48,466.10	60,197.41	29,222.51
BIC (COM-Poisson)	27,277.37	74,523.45	13,210.24	22,504.13	48,609.64	60,346.41	29,355.31
Pseudo-R <sup>2</sup>	0.18	0.218	0.202	0.221	0.193	0.251	0.206
Dispersion	1.7246	2.0707	2.3961	1.8098	1.7092	2.4041	1.6857
<b>Variables</b>	<b>Mauritania</b>	<b>Mozambique</b>	<b>Namibia</b>	<b>Niger</b>	<b>Nigeria</b>	<b>Rwanda</b>	<b>Senegal</b>
Constant	1.368 (0.039)*** ( $p < 0.001/q < 0.001$ )	1.729 (0.045)*** ( $p < 0.001/q < 0.001$ )	1.875 (0.092)*** ( $p < 0.001/q < 0.001$ )	1.517 (0.042)*** ( $p < 0.001/q < 0.001$ )	1.527 (0.023)*** ( $p < 0.001/q < 0.001$ )	1.492 (0.082)*** ( $p < 0.001/q < 0.001$ )	1.578 (0.059)*** ( $p < 0.001/q < 0.001$ )
Premarital status (ref: marital)							
Premarital	0.379 (0.075)*** ( $p < 0.001/q < 0.001$ )	-0.017 (0.041) (0.685/0.685)	0.011 (0.074) (0.881/0.881)	0.487 (0.092)*** ( $p < 0.001/q < 0.001$ )	-0.064 (0.038) (0.096/0.107)	-0.186 (0.071)* (0.009/0.012)	-0.052 (0.096) (0.587/0.587)

(Contd...)

Table S2. (Continued)

Variables	Mauritania	Mozambique	Namibia	Niger	Nigeria	Rwanda	Senegal
Maternal age (ref: <24)							
25–34	1.142 (0.029)*** ( <i>p</i> <0.001/ <i>q</i> <0.001)	1.331 (0.033)*** ( <i>p</i> <0.001/ <i>q</i> <0.001)	1.365 (0.079)*** ( <i>p</i> <0.001/ <i>q</i> <0.001)	1.398 (0.030)*** ( <i>p</i> <0.001/ <i>q</i> <0.001)	1.224 (0.017)*** ( <i>p</i> <0.001/ <i>q</i> <0.001)	1.407 (0.054)*** ( <i>p</i> <0.001/ <i>q</i> <0.001)	1.384 (0.044)*** ( <i>p</i> <0.001/ <i>q</i> <0.001)
35+	1.966 (0.037)*** ( <i>p</i> <0.001/ <i>q</i> <0.001)	2.165 (0.040)*** ( <i>p</i> <0.001/ <i>q</i> <0.001)	2.341 (0.082)*** ( <i>p</i> <0.001/ <i>q</i> <0.001)	2.312 (0.040)*** ( <i>p</i> <0.001/ <i>q</i> <0.001)	1.984 (0.021)*** ( <i>p</i> <0.001/ <i>q</i> <0.001)	2.658 (0.062)*** ( <i>p</i> <0.001/ <i>q</i> <0.001)	2.395 (0.057)*** ( <i>p</i> <0.001/ <i>q</i> <0.001)
Maternal education (ref: no education)							
Primary	-0.070 (0.014)*** ( <i>p</i> <0.001/ <i>q</i> <0.001)	-0.044 (0.018)* (0.014/0.017)	-0.183 (0.038)*** ( <i>p</i> <0.001/ <i>q</i> <0.001)	-0.153 (0.022)*** ( <i>p</i> <0.001/ <i>q</i> <0.001)	-0.134 (0.010)*** ( <i>p</i> <0.001/ <i>q</i> <0.001)	-0.155 (0.023)*** ( <i>p</i> <0.001/ <i>q</i> <0.001)	-0.192 (0.026)*** ( <i>p</i> <0.001/ <i>q</i> <0.001)
Secondary+	-0.246 (0.022)*** ( <i>p</i> <0.001/ <i>q</i> <0.001)	-0.424 (0.026)*** ( <i>p</i> <0.001/ <i>q</i> <0.001)	-0.645 (0.040)*** ( <i>p</i> <0.001/ <i>q</i> <0.001)	-0.342 (0.033)*** ( <i>p</i> <0.001/ <i>q</i> <0.001)	-0.336 (0.011)*** ( <i>p</i> <0.001/ <i>q</i> <0.001)	-0.411 (0.035)*** ( <i>p</i> <0.001/ <i>q</i> <0.001)	-0.434 (0.036)*** ( <i>p</i> <0.001/ <i>q</i> <0.001)
Wealth index (ref: poor)							
Middle	-0.172 (0.017)*** ( <i>p</i> <0.001/ <i>q</i> <0.001)	-0.092 (0.020)*** ( <i>p</i> <0.001/ <i>q</i> <0.001)	-0.174 (0.030)*** ( <i>p</i> <0.001/ <i>q</i> <0.001)	0.012 (0.017) (0.496/0.496)	-0.044 (0.010)*** ( <i>p</i> <0.001/ <i>q</i> <0.001)	-0.028 (0.023) (0.221/0.233)	-0.154 (0.026)*** ( <i>p</i> <0.001/ <i>q</i> <0.001)
Rich	-0.317 (0.020)*** ( <i>p</i> <0.001/ <i>q</i> <0.001)	-0.319 (0.023)*** ( <i>p</i> <0.001/ <i>q</i> <0.001)	-0.270 (0.031)*** ( <i>p</i> <0.001/ <i>q</i> <0.001)	-0.050 (0.017)** (0.003/0.003)	-0.114 (0.011)*** ( <i>p</i> <0.001/ <i>q</i> <0.001)	-0.069 (0.022)** (0.001/0.002)	-0.299 (0.029)*** ( <i>p</i> <0.001/ <i>q</i> <0.001)
Age at birth (ref: <18)							
18–23	-0.313 (0.017)*** ( <i>p</i> <0.001/ <i>q</i> <0.001)	-0.359 (0.018)*** ( <i>p</i> <0.001/ <i>q</i> <0.001)	-0.300 (0.028)*** ( <i>p</i> <0.001/ <i>q</i> <0.001)	-0.309 (0.016)*** ( <i>p</i> <0.001/ <i>q</i> <0.001)	-0.325 (0.009)*** ( <i>p</i> <0.001/ <i>q</i> <0.001)	-0.287 (0.034)*** ( <i>p</i> <0.001/ <i>q</i> <0.001)	-0.345 (0.027)*** ( <i>p</i> <0.001/ <i>q</i> <0.001)
24–29	-0.760 (0.027)*** ( <i>p</i> <0.001/ <i>q</i> <0.001)	-0.863 (0.035)*** ( <i>p</i> <0.001/ <i>q</i> <0.001)	-0.950 (0.048)*** ( <i>p</i> <0.001/ <i>q</i> <0.001)	-0.757 (0.034)*** ( <i>p</i> <0.001/ <i>q</i> <0.001)	-0.787 (0.016)*** ( <i>p</i> <0.001/ <i>q</i> <0.001)	-0.830 (0.045)*** ( <i>p</i> <0.001/ <i>q</i> <0.001)	-0.932 (0.052)*** ( <i>p</i> <0.001/ <i>q</i> <0.001)
30+	-1.334 (0.044)*** ( <i>p</i> <0.001/ <i>q</i> <0.001)	-1.549 (0.067)*** ( <i>p</i> <0.001/ <i>q</i> <0.001)	-1.706 (0.091)*** ( <i>p</i> <0.001/ <i>q</i> <0.001)	-1.323 (0.080)*** ( <i>p</i> <0.001/ <i>q</i> <0.001)	-1.418 (0.029)*** ( <i>p</i> <0.001/ <i>q</i> <0.001)	-1.691 (0.069)*** ( <i>p</i> <0.001/ <i>q</i> <0.001)	-1.850 (0.095)*** ( <i>p</i> <0.001/ <i>q</i> <0.001)
Contraceptive (ref: not using)							
Using	0.145 (0.020)*** ( <i>p</i> <0.001/ <i>q</i> <0.001)	0.094 (0.017)*** ( <i>p</i> <0.001/ <i>q</i> <0.001)	0.027 (0.022) (0.220/0.246)	0.102 (0.019)*** ( <i>p</i> <0.001/ <i>q</i> <0.001)	0.080 (0.011)*** ( <i>p</i> <0.001/ <i>q</i> <0.001)	0.070 (0.017)*** ( <i>p</i> <0.001/ <i>q</i> <0.001)	0.184 (0.021)*** ( <i>p</i> <0.001/ <i>q</i> <0.001)
Age at sexual debut (ref: <15)							
15–17	-0.042 (0.016)** (0.009/0.009)	-0.188 (0.017)*** ( <i>p</i> <0.001/ <i>q</i> <0.001)	-0.054 (0.044) (0.219/0.246)	-0.103 (0.015)*** ( <i>p</i> <0.001/ <i>q</i> <0.001)	-0.069 (0.009)*** ( <i>p</i> <0.001/ <i>q</i> <0.001)	0.163 (0.056)** (0.003/0.005)	-0.042 (0.029) (0.145/0.156)
18–23	-0.141 (0.019)*** ( <i>p</i> <0.001/ <i>q</i> <0.001)	-0.236 (0.026)*** ( <i>p</i> <0.001/ <i>q</i> <0.001)	-0.094 (0.047)* (0.045/0.061)	-0.310 (0.023)*** ( <i>p</i> <0.001/ <i>q</i> <0.001)	-0.148 (0.012)*** ( <i>p</i> <0.001/ <i>q</i> <0.001)	-0.035 (0.057) (0.537/0.537)	-0.137 (0.035)*** ( <i>p</i> <0.001/ <i>q</i> <0.001)
24+	-0.185 (0.032)*** ( <i>p</i> <0.001/ <i>q</i> <0.001)	-0.092 (0.184) (0.616/0.650)	-0.076 (0.068) (0.261/0.276)	-0.419 (0.056)*** ( <i>p</i> <0.001/ <i>q</i> <0.001)	-0.146 (0.026)*** ( <i>p</i> <0.001/ <i>q</i> <0.001)	-0.140 (0.067)* (0.035/0.042)	-0.091 (0.063) (0.148/0.156)
Place of residence (ref: urban)							
Rural	0.013 (0.016) (0.426/0.426)	0.101 (0.020)*** ( <i>p</i> <0.001/ <i>q</i> <0.001)	0.215 (0.026)*** ( <i>p</i> <0.001/ <i>q</i> <0.001)	0.159 (0.019)*** ( <i>p</i> <0.001/ <i>q</i> <0.001)	-0.006 (0.009) (0.526/0.526)	0.039 (0.024) (0.098/0.109)	0.073 (0.025)** (0.004/0.005)

(Cont'd...)

Table S2. (Continued)

Variables	Mauritania	Mozambique	Namibia	Niger	Nigeria	Rwanda	Senegal
Premarital maternal age (ref: marital:<24)							
Premarital:25-34	-0.326 (0.084)*** (p<0.001/q<0.001)	-0.073 (0.050) (0.141/0.157)	-0.117 (0.085) (0.171/0.216)	-0.302 (0.102)** (0.003/0.003)	-0.041 (0.042) (0.339/0.358)	-0.219 (0.080)** (0.006/0.009)	-0.193 (0.109) # (0.078/0.099)
Premarital:35+	-0.403 (0.080)*** (p<0.001/q<0.001)	-0.182 (0.047)*** (p<0.001/q<0.001)	-0.196 (0.080)* (0.015/0.022)	-0.585 (0.103)*** (p<0.001/q<0.001)	-0.079 (0.041) # (0.052/0.062)	-0.254 (0.077)** (0.001/0.002)	-0.159 (0.106) (0.134/0.156)
<i>n</i>	9,524	9,881	6,184	9,042	29,153	8,562	5,487
Model evaluation							
Poisson dispersion	0.7091835	0.5644967	0.5075208	0.6172301	0.6680879	0.5063177	0.5737909
LRT statistic	(572.27)*** (p<0.001/q<0.001)	(1,430.63)*** (p<0.001/q<0.001)	(1,195.46)*** (p<0.001/q<0.001)	(1,015.19)*** (p<0.001/q<0.001)	(2,329.57)*** (p<0.001/q<0.001)	(1,695.60)*** (p<0.001/q<0.001)	(773.30)*** (p<0.001/q<0.001)
AIC (Poisson)	35,972.20	34,508.80	20,219.31	35,025.83	1,10,916.47	29,444.14	19,701.52
AIC (COM-Poisson)	35,401.93	33,080.16	19,025.85	34,012.64	1,08,588.90	27,750.54	18,930.22
BIC (COM-Poisson)	35,538	33,216.93	19,153.71	34,147.73	1,08,746.23	27,884.58	19,055.82
Pseudo-R <sup>2</sup>	0.185	0.207	0.203	0.221	0.198	0.219	0.224
Dispersion	1.5163	1.9522	2.2167	1.7552	1.6128	2.198	1.9222
Variables	Sierra Leone	South Africa	Tanzania	Togo	Uganda	Zambia	Zimbabwe
Premarital status (ref: marital)							
Constant	1.466 (0.045)*** (p<0.001/q<0.001)	2.316 (0.151)*** (p<0.001/q<0.001)	1.327 (0.042)*** (p<0.001/q<0.001)	1.723 (0.068)*** (p<0.001/q<0.001)	1.539 (0.037)*** (p<0.001/q<0.001)	1.687 (0.051)*** (p<0.001/q<0.001)	2.359 (0.107)*** (p<0.001/q<0.001)
Premarital	-0.124 (0.042)** (0.003/0.004)	-0.206 (0.125) (0.098/0.133)	-0.058 (0.043) (0.181/0.202)	-0.023 (0.078) (0.767/0.767)	-0.096 (0.034)** (0.005/0.005)	-0.152 (0.040)*** (p<0.001/q<0.001)	-0.149 (0.071)* (0.037/0.043)
Maternal age (ref: <24)							
25-34	1.111 (0.034)*** (p<0.001/q<0.001)	1.291 (0.129)*** (p<0.001/q<0.001)	1.180 (0.032)*** (p<0.001/q<0.001)	1.401 (0.045)*** (p<0.001/q<0.001)	1.274 (0.026)** (p<0.001/q<0.001)	1.528 (0.038)*** (p<0.001/q<0.001)	1.611 (0.048)*** (p<0.001/q<0.001)
35+	1.906 (0.039)*** (p<0.001/q<0.001)	2.289 (0.129)*** (p<0.001/q<0.001)	1.996 (0.037)*** (p<0.001/q<0.001)	2.329 (0.054)*** (p<0.001/q<0.001)	2.107 (0.032)** (p<0.001/q<0.001)	2.515 (0.046)*** (p<0.001/q<0.001)	2.558 (0.058)*** (p<0.001/q<0.001)
Maternal education (ref: no education)							
Primary	-0.042 (0.021)* (0.042/0.053)	-0.115 (0.074) (0.118/0.133)	-0.162 (0.016)*** (p<0.001/q<0.001)	-0.210 (0.020)*** (p<0.001/q<0.001)	-0.132 (0.014)*** (p<0.001/q<0.001)	-0.111 (0.022)*** (p<0.001/q<0.001)	-0.310 (0.076)*** (p<0.001/q<0.001)
Secondary+	-0.355 (0.021)*** (p<0.001/q<0.001)	-0.602 (0.070)*** (p<0.001/q<0.001)	-0.296 (0.024)*** (p<0.001/q<0.001)	-0.526 (0.030)*** (p<0.001/q<0.001)	-0.410 (0.021)*** (p<0.001/q<0.001)	-0.446 (0.027)*** (p<0.001/q<0.001)	-0.564 (0.077)*** (p<0.001/q<0.001)

(Cont'd...)

Table S2. (Continued)

Variables	Sierra Leone	South Africa	Tanzania	Togo	Uganda	Zambia	Zimbabwe
Wealth index (ref: poor)							
Middle	-0.029 (0.017) (0.092/0.103)	-0.108 (0.035)** (0.002/0.003)	-0.092 (0.017)** (p<0.001/q<0.001)	-0.246 (0.024)** (p<0.001/q<0.001)	-0.031 (0.014)* (0.032/0.036)	-0.076 (0.019)** (p<0.001/q<0.001)	-0.160 (0.032)** (p<0.001/q<0.001)
Rich	-0.223 (0.024)** (p<0.001/q<0.001)	-0.302 (0.038)** (p<0.001/q<0.001)	-0.267 (0.019)** (p<0.001/q<0.001)	-0.468 (0.042)** (p<0.001/q<0.001)	-0.166 (0.014)** (p<0.001/q<0.001)	-0.294 (0.025)** (p<0.001/q<0.001)	-0.441 (0.043)** (p<0.001/q<0.001)
Age at birth (ref: <18)							
18-23	-0.323 (0.016)** (p<0.001/q<0.001)	-0.376 (0.035)** (p<0.001/q<0.001)	-0.285 (0.016)** (p<0.001/q<0.001)	-0.291 (0.023)** (p<0.001/q<0.001)	-0.262 (0.013)** (p<0.001/q<0.001)	-0.326 (0.017)** (p<0.001/q<0.001)	-0.323 (0.032)** (p<0.001/q<0.001)
24-29	-0.794 (0.028)** (p<0.001/q<0.001)	-1.061 (0.054)** (p<0.001/q<0.001)	-0.846 (0.031)** (p<0.001/q<0.001)	-0.898 (0.040)** (p<0.001/q<0.001)	-0.770 (0.030)** (p<0.001/q<0.001)	-0.972 (0.040)** (p<0.001/q<0.001)	-0.984 (0.066)** (p<0.001/q<0.001)
30+	-1.367 (0.061)** (p<0.001/q<0.001)	-1.780 (0.099)** (p<0.001/q<0.001)	-1.558 (0.065)** (p<0.001/q<0.001)	-1.489 (0.077)** (p<0.001/q<0.001)	-1.647 (0.087)** (p<0.001/q<0.001)	-1.908 (0.095)** (p<0.001/q<0.001)	-1.991 (0.135)** (p<0.001/q<0.001)
Contraceptive (ref: not using)							
Using	0.065 (0.016)** (p<0.001/q<0.001)	0.153 (0.027)** (p<0.001/q<0.001)	-0.027 (0.014)* (0.055/0.065)	0.155 (0.023)** (p<0.001/q<0.001)	0.068 (0.012)** (p<0.001/q<0.001)	0.152 (0.015)** (p<0.001/q<0.001)	0.208 (0.023)** (p<0.001/q<0.001)
Age at sexual debut (ref: <15)							
15-17	-0.061 (0.015)** (p<0.001/q<0.001)	-0.082 (0.051) (0.106/0.133)	0.009 (0.018) (0.625/0.660)	-0.018 (0.027) (0.504/0.532)	-0.066 (0.014)** (p<0.001/q<0.001)	-0.074 (0.018)** (p<0.001/q<0.001)	-0.021 (0.044) (0.637/0.658)
18-23	-0.123 (0.022)** (p<0.001/q<0.001)	-0.125 (0.055)* (0.022/0.032)	0.001 (0.023) (0.963/0.963)	-0.099 (0.032)** (0.002/0.002)	-0.187 (0.018)** (p<0.001/q<0.001)	-0.152 (0.024)** (p<0.001/q<0.001)	-0.296 (0.051)** (p<0.001/q<0.001)
24+	-0.205 (0.114)* (0.072/0.086)	-0.162 (0.104) (0.119/0.133)	0.177 (0.053)** (p<0.001/q<0.001)	0.043 (0.062) (0.490/0.532)	-0.212 (0.059)** (p<0.001/q<0.001)	-0.274 (0.081)** (p<0.001/q<0.001)	-0.299 (0.094)** (0.001/0.002)
Place of residence (ref: urban)							
Rural	0.107 (0.022)** (p<0.001/q<0.001)	0.135 (0.031)** (p<0.001/q<0.001)	0.190 (0.018)** (p<0.001/q<0.001)	0.064 (0.040) (0.105/0.142)	0.192 (0.016)** (p<0.001/q<0.001)	0.166 (0.021)** (p<0.001/q<0.001)	0.115 (0.041)** (0.006/0.007)
Premarital							
maternal age (ref: marital:<24)							
Premarital:25-34	0.002 (0.048) (0.963/0.963)	-0.095 (0.136) (0.483/0.483)	-0.111 (0.050)* (0.026/0.033)	-0.097 (0.088) (0.273/0.324)	-0.024 (0.040) (0.552/0.552)	-0.051 (0.048) (0.289/0.289)	0.063 (0.083) (0.449/0.502)
Premarital:35+	0.016 (0.046) (0.732/0.773)	-0.145 (0.131) (0.267/0.282)	-0.192 (0.047)** (p<0.001/q<0.001)	-0.113 (0.084) (0.180/0.228)	0.028 (0.038) (0.468/0.494)	-0.059 (0.046) (0.194/0.205)	-0.036 (0.081) (0.658/0.658)
n	11,367	5,942	10,932	6,736	13,585	10,179	6,972
Model evaluation							
Poisson dispersion	0.6067338	0.4242113	0.6421214	0.5530214	0.6251432	0.5359017	0.4291367

(Cont'd...)

Table S2. (Continued)

Variables	Sierra Leone	South Africa	Tanzania	Togo	Uganda	Zambia	Zimbabwe
LRT statistic	(1,297.57) <sup>***</sup> ( $p < 0.001/q < 0.001$ )	(1,787.15) <sup>***</sup> ( $p < 0.001/q < 0.001$ )	(985.82) <sup>***</sup> ( $p < 0.001/q < 0.001$ )	(1,049.00) <sup>***</sup> ( $p < 0.001/q < 0.001$ )	(1,402.63) <sup>***</sup> ( $p < 0.001/q < 0.001$ )	(1,691.23) <sup>***</sup> ( $p < 0.001/q < 0.001$ )	(2,026.98) <sup>***</sup> ( $p < 0.001/q < 0.001$ )
AIC (Poisson)	40,590.05	18,094.87	39,660.81	24,130.52	50,740	35,927.77	22,596.69
AIC (COM-Poisson)	39,294.48	16,309.72	38,676.99	23,083.52	49,339.37	34,238.54	20,571.72
BIC (COM-Poisson)	39,433.91	16,436.83	38,815.68	23,213.01	49,482.19	34,375.88	20,701.86
Pseudo-R <sup>2</sup>	0.19	0.169	0.19	0.226	0.223	0.248	0.212
Dispersion	1.8014	2.7563	1.682	1.9895	1.7323	2.0495	2.6529

Notes: Significance level: \*\*\*FDR-adjusted  $p < 0.001$ ; \*\*FDRadjusted  $p < 0.01$ ; \*FDRadjusted  $p < 0.05$ ; # FDRadjusted  $p < 0.1$ ;  $q = \text{FDR } p$ .  
 Abbreviations: AIC: Akaike information criterion; BIC: Bayesian information criterion; COM-Poisson: Conway-Maxwell-Poisson; FDR: False discovery rate; LRT: Likelihood ratio test;  
 PseudoR<sup>2</sup>: Pseudo coefficient of determination;  $q = \text{FDR } p$ ;  $q$ -value (FDR-adjusted  $p$ -value); Ref: reference.